



**Nationwide  
Platforms**  
A **LOXAM** Company

# Training Guide

**0845 601 1032**  
[nationwideplatforms.co.uk](http://nationwideplatforms.co.uk)

# Contents

Nationwide Platforms	4-5
IPAF Operator Courses	8-9
IPAF Courses	10-11
Ladders, Steps & Nationwide Platforms Harness Course	12-13
Courses - First Aid & Safety Management	14
Courses - Toolbox Talks	16-17
Courses - Workplace Training	18-21
Location	22-23



## Virtual reality training

Employing pioneering new technology, we are able to allow operators a true-to-life experience in a safe and controlled environment.



**Nationwide Platforms**  
A LOXAM Company

## Workplace safety

From IOSH to First Aid training, manual handling and more, we can provide your training at one of our dedicated training centres or at your workplace.



CTB construction skills



## Powered access training

Look for International Powered Access Federation (IPAF) accreditation training. These courses are internationally recognised and offer training in using, managing and working effectively with access platforms.



## Site specific training advice

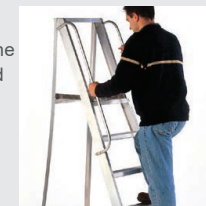
Use our Toolbox Talks to get your employees up to speed. We can provide tailored courses on working at height on your site.



**Nationwide Platforms**  
A LOXAM Company

## Steps, ladders and aluminium towers

We deliver courses offering training in the safe use of ladders and steps, as well as PASMA training for the construction, use and inspection of mobile aluminium towers.



**Nationwide Platforms**  
A LOXAM Company

# Nationwide Platforms

**As the European market leader in powered access training, we have the expertise to help you work safer and more productively at height.**

**Let us help you find:**

- IPAF, PASMA, IOSH and other accredited courses delivered by fully trained, award-winning instructors
- On-site, bespoke training and Toolbox Talks
- Virtual reality training course on-site, and classroom settings
- One clear price that includes full certification and lunch (where applicable)
- Training on your work site or at one of our training centres across the UK

**With vast experience of working on major projects and tackling site specific issues, the services we can offer you include:**

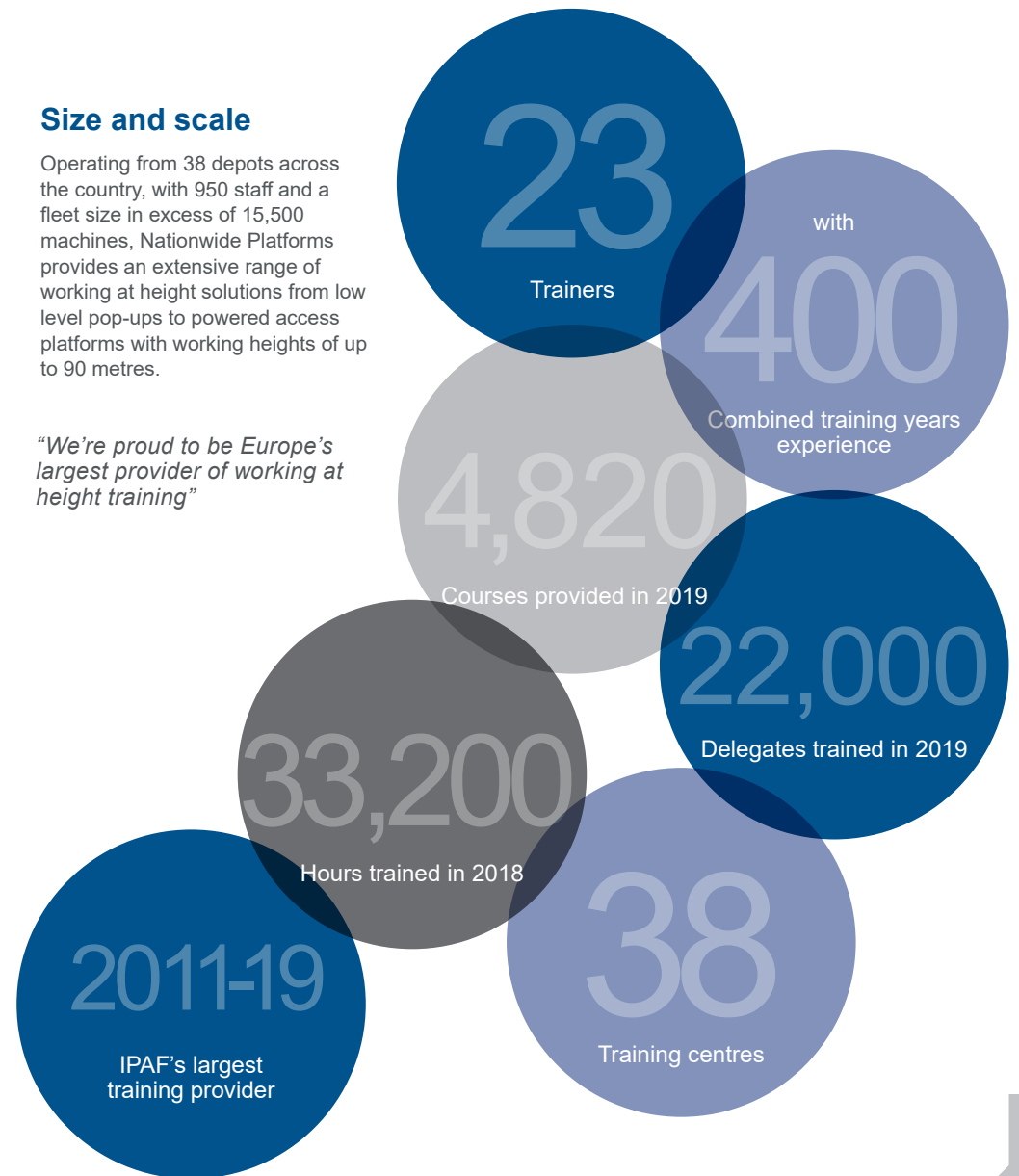
- Risk assessment and method statements
- New product development
- Powered access policies
- Machine modifications
- Health and safety guidance



## Size and scale

Operating from 38 depots across the country, with 950 staff and a fleet size in excess of 15,500 machines, Nationwide Platforms provides an extensive range of working at height solutions from low level pop-ups to powered access platforms with working heights of up to 90 metres.

*“We’re proud to be Europe’s largest provider of working at height training”*



# Safety



**YOUR SAFETY  
OUR PRIORITY**

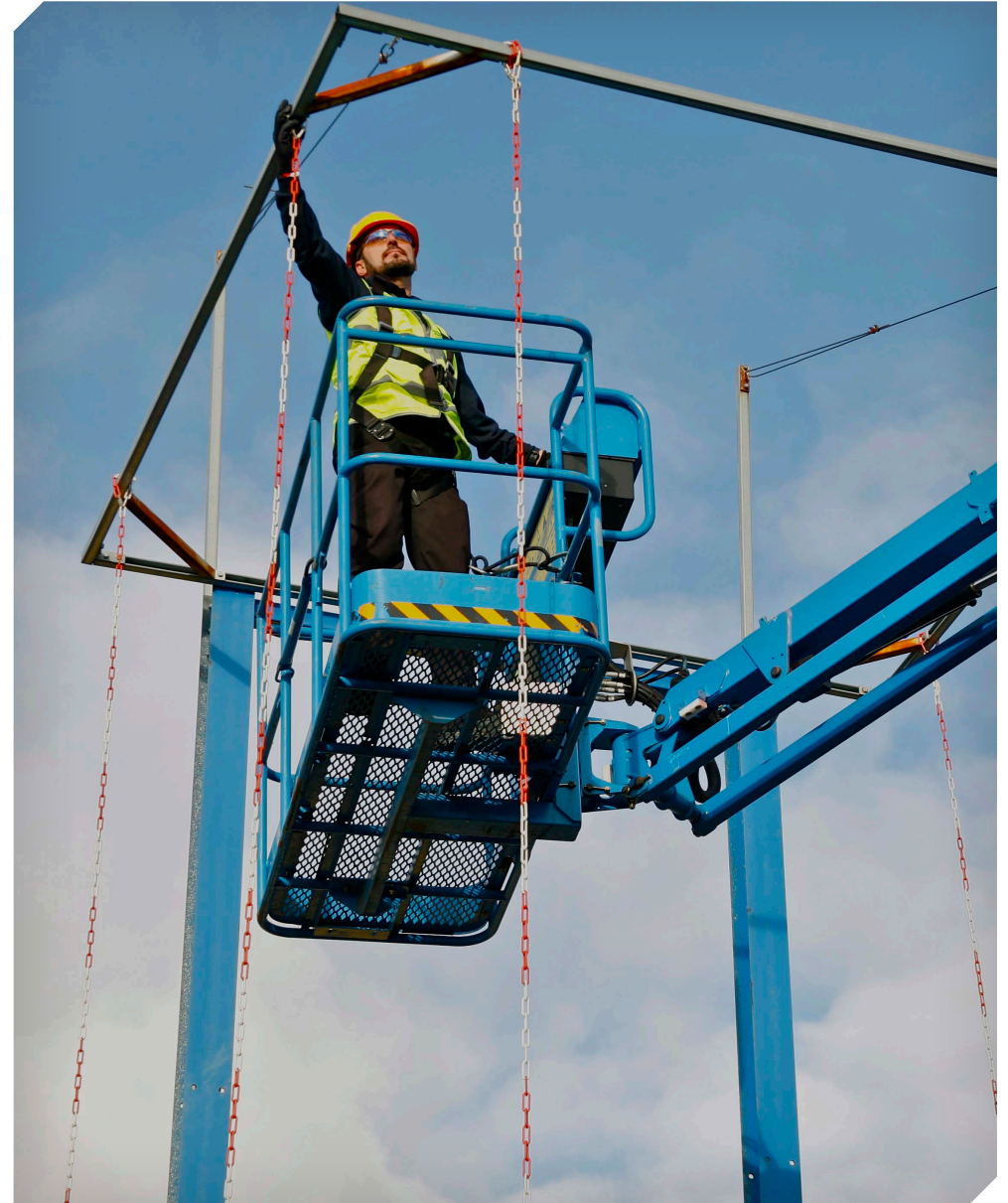
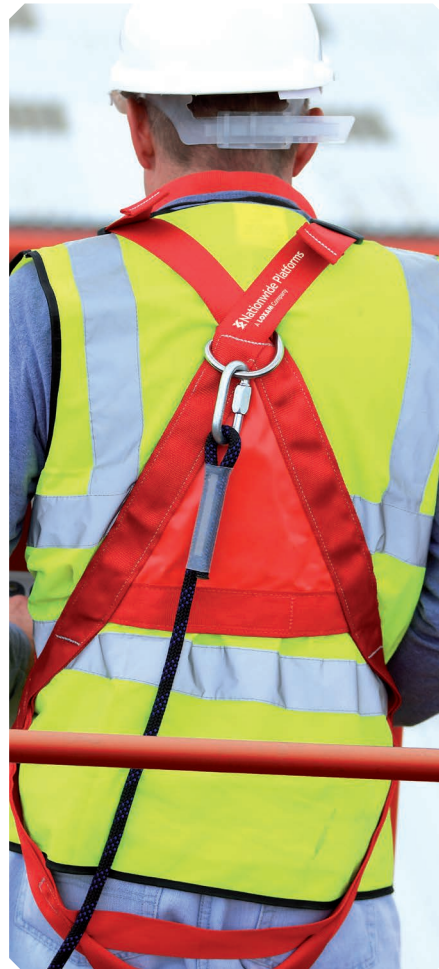
**At Nationwide Platforms, safety is always our number one priority.**

That's why every single step we take to serve you has been designed with your welfare and wellbeing in mind.

We'd like to invite you to join our safety journey and see why you can always trust our products and services to provide the safeguard you need.



Scan the QR code or visit our website to learn more



# Virtual Reality Training Simulator

As Europe's leading provider of powered access training, Nationwide Platforms has invested in ground-breaking virtual reality simulators to complement its range of training courses.

This pioneering new technology has been designed to allow operators to experience a true-to-life look and feel of operating an access platform in a safe and controlled environment.

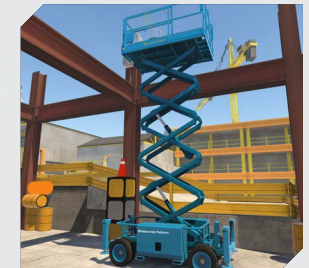
- Four course principles
- 32 scissor and boom lift scenarios
- State-of-the-art virtual reality technology
- Replica controls based on real machines
- Fully immersive and realistic high-risk manoeuvres in a safe environment
- Conducted at training centres or on-site
- Operator skills scored using operator metrics and tracking systems

#### Training Benefits:

- Operators familiarised with MEWP use
- Safer, more experienced operators
- Practice in responding to risk
- Reduction in the number of accidents on site
- Reduction to damage to buildings and equipment
- High Risk operating scenarios in a risk free environment

#### Training courses cover four principle areas:

- Introduction to Powered Access
- Operator Mid-term Assessment and Update
- Site Induction and Workforce Skills Assessment
- Risk Assessment Workshop (see over for details)



The Virtual Reality simulator realistically mimics the sensation of boom and scissor lift operations.

# IPAF Operator Courses

## The International Powered Access Federation (IPAF) promotes the safe and effective use of powered access worldwide.

Those who successfully complete IPAF training are awarded the Powered Access Licence Smart (PAL) card, the most widely held and recognised proof of training for platform operators. The PAL Smart card is valid for five years and shows the machine categories that the operator has been trained on. It also features the holder's photo and signature, and can be verified on IPAF's website ([www.ipaf.org](http://www.ipaf.org)).



### IPAF enhanced eLearning module

The enhanced eLearning modules are part of their full training programme for Mobile Elevating Work Platforms (MEWPs).

#### How does it work?

This does not replace practical training and all trainees who complete the online session must still pass a supervised theory test at any of our IPAF training centres.

#### Benefits:

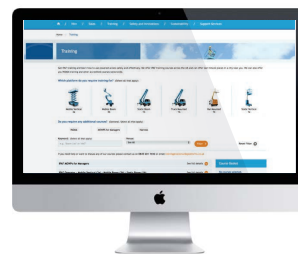
- Flexible
- Complete the theory in the comfort of your own home
- 24/7 availability
- Interactive engaging content, including videos, games, quizzes and simulations
- Longer practical sessions



## Booking your course

Selection and booking of your chosen training course has never been easier.

You can choose how you wish to book your training courses by either calling 0845 601 1032, or using our improved booking site [nationwideplatforms.co.uk/training](http://nationwideplatforms.co.uk/training) where you can select, book and pay for your training course online.



### Virtual reality training

See page 8–9 for course details

*"IPAF welcomes this technology and immediately endorses the use of VR simulators as a good training tool for MEWP operations, when used in addition to the current IPAF theory and practical training programmes." Tim Whiteman, IPAF CEO*

With more IPAF instructors, training centres and experience in delivering courses than anyone else, you can rely on us to get you trained and ready to work safely on your next project.

Our IPAF operator courses are available at our training centres across the UK and can even be held on your own site.

### IPAF Operator Courses



Our complete range of training courses are ideal for anyone looking for advanced or specialist training.

Our additional range of IPAF training for powered access users includes:

- IPAF MEWPs for Managers
- IPAF PAL+
- IPAF Competent Assessed Persons
- IPAF demonstrator
- IPAF MEWP Harness Use and Inspection

- 1a Static Vertical
- 1b Static Boom
- 3a Mobile Vertical
- 3b Mobile Boom



#### Who should attend?

This programme is designed for the operators of Mobile Elevating Work Platforms (MEWPs) and those looking to renew their operator licences.

#### Aim

To instruct an operator to prepare and operate various types of MEWPs.

#### Outcomes

By the end of the course delegates will:

- Be aware of the relevant Health & Safety Regulations
- Be aware of accident prevention and control
- Be aware of the needs regarding personnel protection
- Be aware of the need to refer to the operating manual
- Be able to drive the MEWP safely and manoeuvre the machine as required, as well as correctly position and carry out the required tasks in a proper manner, inside and outside a building.

Duration	1 full day
Location	At our depot or on-site
Method	Classroom tutorials, theory test, demonstrations and practical tests
Delegate numbers	x 4 - 2 Categories x 6 - 1 Category

## Push Around Vertical (PAV)



#### Who should attend?

This programme is designed for the operators of Mobile Elevating Work Platforms (MEWPs) and those looking to renew their operator licences.

#### Aim

To instruct an operator to prepare and operate various types of MEWPs.

#### Outcomes

By the end of the course delegates will:

- Be aware of the relevant Health & Safety Regulations
- Be aware of accident prevention and control
- Be aware of the needs regarding personnel protection
- Be aware of the need to refer to the operating manual
- Be able to drive the MEWP safely and manoeuvre the machine as required, as well as correctly position and carry out the required tasks in a proper manner, inside and outside a building.

Duration	Half day
Location	At our depot or on-site
Method	Classroom tutorials, theory test, demonstrations and practical tests
Delegate numbers	8 per session max

# IPAF Courses

Whether you're in a managerial or supervisory position, require further safety awareness, or are aiming to teach others about using powered access, our extensive IPAF courses can provide you with the training you need.

As well as being internationally recognised, all of our courses are delivered by fully qualified instructors with experience in promoting working at height best practice.



## IPAF Demonstrator



The course for any IPAF operator who is required to handover and familiarise powered access, such as boom and scissor lifts, to customers or work colleagues.

### What will I learn?

- How to demonstrate and familiarise operators with their responsibilities when using powered access machines
- How to demonstrate pre-operational and safe operating procedures as well as understanding the limitations of MEWPs

Duration	1-3 days
Location	At our depot or on-site
Method	Classroom tutorials, theory test, demonstrations and practical tests
Delegate numbers	x 4 - 2 Categories x 6 - 1 Category

## IPAF MEWP Harness Use and Inspection



The IPAF accredited course designed for any operator, supervisor or manager required to select, inspect and use harnesses and lanyards for usage on MEWPs.

### What will I learn?

- A greater understanding of the regulations and legislation relating to working at height
- How to select the correct work equipment and restraint systems to reduce risk and prevent falls from height
- How to carry out inspections of equipment to ensure they are safe and fit for purpose
- How to confidently select and don a harness
- How to inspect a harness

Duration	Half day
Location	At our depot or on-site
Method	Classroom tutorials, theory test, demonstrations and practical tests
Delegate numbers	x 10 per session

## IPAF MEWPs for Managers



The essential training for anyone who supervises or plans working at height.

### What will I learn?

- The importance of pre-use checks and daily maintenance carried out prior to commencing work
- A better understanding of the regulations relevant to MEWP usage
- How to use the correct emergency procedures, capacities and limitations to enable safe operation
- How to correctly select MEWPs and fall protection equipment

### Who should attend?

- Project managers, site managers, supervisors, team leaders and all other on-site personnel responsible for supervising MEWPs
- Health and safety managers with a responsibility for on-site safety sales staff, site surveyors and any other employee advising on powered access use
- Business owners and managers who have MEWPs operating on their premises

Duration	1 full day
Location	At our depot or on-site
Method	Classroom tutorials and written tests
Delegate numbers	x 10 per session

*Practical demonstrations are also included if machines are available*

## IPAF PAL+



### What will I learn?

- IPAF PAL+ provides advanced powered access training with an emphasis on practical skills
- Delegates will receive guidance and be tested on safe work at height in challenging environments
- Practical testing to overcome 'real life' challenges
- Supplementary classroom based training helps develop delegate knowledge

### Who should attend?

- Powered access users who have already obtained their IPAF PAL card in an applicable category
- Now a compulsory requirement from the UK Construction Group for netters and steel erectors since October 2013.

Duration	1 full day
Location	At one of our depots nationwide
Method	Practical training and testing alongside classroom tutorials, written tests and an interview to test operator knowledge
Delegate numbers	x 4 - 2 Categories x 6 - 1 Category

## The IPAF Competent Assessed Persons (CAP)



The IPAF Competent Assessed Persons (CAP) programme focuses on a crucial aspect of safety, that of the machine itself.

It is intended to provide guidance for platform engineers on compliance with regulatory requirements and to offer documented evidence that individuals can be regarded as competent persons to plan, manage or carry out thorough examinations of powered access equipment within the context of current legislation.

The CAP programme complements IPAF's operator training courses by extending the promotion of a safety culture to machine maintenance as well as operation.

Our experienced training staff will provide guidance through presentations and individually assess those attending the sessions.

Successful assessment provides suitable candidates with the valuable documentary evidence that they are certified as competent persons to plan, manage or carry out thorough examinations of platforms in the context of current legislation including the Work at Height Regulations, LOLER and PUWER 98.

Duration	1 full day
Location	At our depot or on-site
Method	Practical and classroom based
Delegate numbers	4 per session max

# Courses



## Ladders and Steps



This programme is designed for managers, supervisors and operatives who may require to work at height using ladders or steps.

### What will I learn?

- A greater awareness of the regulations and legislation affecting employers and employees involved with working at height
- How to correctly select, inspect and safely use the appropriate ladders and steps for different tasks
- Understand how to safely position and secure ladders as access points or to use for work

Duration	Half day
Location	At our depot or on-site
Method	Practical and classroom based
Delegate numbers	x 10 per session

## Nationwide Platforms Harness Course



Training for managers, supervisors and operatives, who are required to select, inspect and use appropriate harnesses and lanyards.

### What will I learn?

- A better understanding of the Work at Height Regulations (2005), associated legislation and be fully aware of legal responsibilities
- Select the correct work equipment and restraint systems to help prevent falls from height thus reducing risk to yourself and to others
- How to carry out periodic inspections and thorough examinations of harnesses, lanyards and associated equipment to ensure they are safe and fit for purpose
- Confidently select and don the correct harness/lanyard combination and associated equipment

Duration	Half day
Location	At our depot or on-site
Method	Practical and classroom based
Delegate numbers	x 10 per session

## PASMA Standard Access Tower



This programme is designed for managers, supervisors and operatives who may need to construct, use and inspect Mobile Aluminium Towers (MATs).

### What will I learn?

- How to safely construct and de-construct MATs
- How to correctly carry out a full safety inspection of towers
- A greater awareness of the hazards associated with towers
- The Personal Protective Equipment (PPE) required for working safely with MATs
- The safety regulations associated with the use of MATs

Duration	1 full day
Location	At our depot or on-site
Method	Practical and classroom based
Delegate numbers	x 12 per session

## PASMA Low Level Access



Training for personnel who work from prefabricated units under 2.5 metres of height.

### What will I learn?

- How to safely assemble, dismantle and relocate low level access units without risk of personal injury to the delegate or others
- The legislations and regulations affecting working at height using low level access units
- The hazards associated with the use of low level access units
- The inspection of completed low level units and the management of inspections records

Duration	Half day
Location	At our depot or on-site
Method	Practical and classroom based
Delegate numbers	x 12 per session

## PASMA Combined (Standard & Low Level)



The ideal course for anyone who work from low level access units and standard mobile access towers.

### What will I learn?

- How to safely assemble, dismantle and relocate low level access units and standard mobile aluminium towers without risk of personal injury to the delegate or others
- Current legislation, regulations and guidances affecting working from access towers and low level towers
- How to carry out inspections and maintain inspection records
- The hazards affecting the use of access towers and low level towers

Duration	1 full day
Location	At our depot or on-site
Method	Practical and classroom based
Delegate numbers	x 8 per session

# Courses

## First Aid at Work



This HSE approved course is for workplace first aiders and other delegates who require the knowledge and ability to deal with first aid emergencies.

### What will I learn?

- How to use a first aid kit
- Treatment of an unconscious casualty
- Treatment for heart attacks, shock, choking, bleeding, burns and scalds, poisoning, fractures, seizures, fainting, low blood sugar, allergic reactions, eye injuries and other potential incidents
- How to keep appropriate safety records

Duration	3 full days
Location	At our depot or on-site
Method	Practical and classroom based
Delegate numbers	x 12 per session

## Emergency First Aid at Work



This HSE approved programme is for nominated emergency first aiders, or anyone requiring a comprehensive one day first aid course.

### What will I learn?

- Basic life saving first aid in the workplace
- A more thorough knowledge of relevant Health & Safety Regulations
- How to manage an incident in the workplace
- The priorities of first aid
- Treatment of unconscious casualties, bleeding, seizures, choking, shock and resuscitation
- Common workplace injuries

Duration	1 full day
Location	At our depot or on-site
Method	Practical and classroom based
Delegate numbers	x 12 per session

## First Aid at Work Re-qualification / Annual refresher training



This HSE approved course updates the first aid skills of people who need to renew their statutory first aid and work certificate. First aiders whose certificates have expired for more than 28 days must attend the three day course.

### What will I learn?

The course aims to update and refresh knowledge of the entire first aid syllabus. This includes:

- How to use a first aid kit
- Treatment of an unconscious casualty
- Treatment for heart attacks, shock, choking, bleeding, burns and scalds, poisoning, fractures, seizures, fainting, low blood sugar, allergic reactions, eye injuries and other potential incidents
- How to keep appropriate safety records

Duration	Re-qualification - 2 full days Annual refresher - Half day
Location	At our depot or on-site
Method	Practical and classroom based
Delegate numbers	x 12 per session



# Courses

## The pioneering new virtual reality technology allows a fully immersive and realistic training environment.

With 32 scissor and boom lift scenarios designed to allow operators to experience a true-to-life look and feel of operating an access platform in a safe and controlled environment.

Conducted at training centres or on-site please contact **0808 100 3586** and ask one of our training consultants for full details.



### Introduction to Powered Access

**Nationwide Platforms**  
A LOXAM Company

Designed to introduce new entrants to the industry the uses, risks and types of powered access equipment as well as the safety laws and regulations involved. Users will complete two basic manoeuvre scenarios on the simulator.

#### Module 1 - Introduction to Powered Access

- What are they?
- What are the uses?
- What are the risks?
- Types of powered access

#### Module 2 - Regulations & Law Overview

- Health & Safety at Work Act
- PUWER
- Working at Height

#### Module 3 - Access Platform Controls

- Control Guide
- Control demo/walk-through

#### Module 4 - Walk-through & Demo

- Simulator functions
- Familiarisation
- Scoring overview
- Module 5 - Testing
- 10 Question multiple choice
- 2 VR Scenario Tests

Duration	Half day
Location	At our depot or on-site
Method	Virtual reality experience
Delegate numbers	6 maximum

### Operator Mid-term Assessment / Update

**Nationwide Platforms**  
A LOXAM Company

Candidates will learn changes to IPAF, regulations and law surrounding powered access with courses of increasing difficulty identifying operator strengths as well as potential training needs. (Only for IPAF cards holders)

#### Module 1 - IPAF & Safety Update

- IPAF Update
- Safety Update
- BS8460
- Working at Height Regulations
- CDM
- Recent accidents
- Causes & factors
- Accident Outcomes

#### Module 2 - Safety Systems

- Importance of Pre use Check
- Emergency Lowering

#### Module 3 - Walk-through & Demo

- Simulator functions
- Familiarisation
- Scoring overview

#### Module 4 - Virtual Simulator Assessment

- 6 VR scenarios
- 3 levels of difficulty

#### Module 5 - Testing

- Knowledge Test 15 questions
- Wrap Up

Duration	1 day
Location	At our depot or on-site
Method	Virtual reality experience
Delegate numbers	16 maximum

### Site Induction / Workforce Skills Assessment

**Nationwide Platforms**  
A LOXAM Company

Experienced IPAF card holders will complete scenarios of increasing difficulty with a trainer providing live feedback and comments on operational competence.

Training outcomes and advice for candidates and managers based on scores, along with recommendations for machine use and further training required.

#### Module 1 - Walk-through & Demo

- Simulator functions
- Familiarisation
- Scoring overview

#### Module 2 - Virtual Simulator Assessment

- 6 VR scenarios
- 3 levels of difficulty

#### Module 3 - Feedback

- Training Suggestions
- Operator Feedback
- Wrap Up

Duration	1 day
Location	At our depot or on-site
Method	Virtual reality experience
Delegate numbers	30 maximum

### Risk Awareness Workshop

**Nationwide Platforms**  
A LOXAM Company

The course provides an update on powered access risks and control measures as well as an update on current laws regarding the use of access equipment. This training can support risk assessment planning and post-accident investigation.

#### Module 1 - IPAF & Safety Update

- IPAF Update
- Safety Update
- Working at Height Regulations
- Recent Accidents
- Causes & Factors
- Accident Outcomes

#### Module 2 - Powered Access Risks & Controls

- Pre Use Checks
- Safety Systems
- Familiarisation
- Risk Assessments

#### Module 3 - Walk-through & Demo

- Simulator functions
- Familiarisation
- Scoring overview

#### Module 4 - VR Assessment

- Operate the machine in multiple scenarios
- Evaluate risks in each scenario
- Debrief risks and challenges

#### Module 5 - Testing

- Knowledge Test 10 questions
- Wrap Up

Duration	1 day
Location	At our depot or on-site
Method	VR experience
Delegate numbers	10 maximum

# Courses

If you're working on site there may be specific issues that arise requiring further advice, knowledge or training for you and your colleagues.

We offer a range of standard Toolbox Talks but can also provide additional talks in line with your specific requirements tailored to any organisation.

Please contact us on **0845 745 0000** and ask for one of our training consultants to discuss this in further detail.

## Daily Checks Toolbox Talk

**Nationwide Platforms**  
A LOXAM Company

Even trained operators can cut corners while doing their daily checks, particularly under the pressure of a working day, but it is vital that a full check is carried out on the machine before use.

This Toolbox Talk will re-visit the daily checks operators are taught on their IPAF operators course and ensure that delegates are aware of the importance of daily checks for their safety and the safety of those around them.

## Emergency Descent Toolbox Talk

**Nationwide Platforms**  
A LOXAM Company

This session focuses on how to bring the platform down to ground level in case of an emergency while elevated.

Individual pieces of powered access have different emergency descents, but the procedure should be the same.

This course is aimed at operatives and designated ground staff to ensure they are confident in the emergency descent procedure on the machines being used on-site.

## Powered Access Operator Assessments

**Nationwide Platforms**  
A LOXAM Company

Are your operators working safely on site while using powered access platforms?

We can't be everywhere all the time to be able to answer that question, but we can visit your site and assess your operators.

An assessment will be taken of the whole site and operators working on it. This will then be provided to you in a written report, enabling you to take steps to improve safety on your site.

## Secondary Guarding Toolbox Talk

**Nationwide Platforms**  
A LOXAM Company

This Toolbox Talk covers the causes and factors that increase the risk of entrapment, the processes and products available to reduce these risks and essential rescue advice.

Entrapment incidents, also known as trapping or crushing, are caused when an operator is trapped between the platform and an object in the work area, unable to regain control of the machine, resulting in injury or fatality.

Having the appropriate training can help greatly reduce the chance of an entrapment incident by raising operator awareness to trapping risks.



Scan this QR code with your Smart Phone App to see a video of our secondary guarding solutions in action.

Duration	30 minutes
Location	On-site
Method	Practical and classroom based
Delegate numbers	10 per session max

Duration	30 minutes
Location	On-site
Method	Practical and classroom based
Delegate numbers	10 per session max

Duration	2-4 hours dependent on number of operators and size of your site
Location	On-site
Method	Practical and classroom based
Delegate numbers	10 per session max

Duration	30 minutes
Location	On-site
Method	Practical and classroom based
Delegate numbers	10 per session max

To see videos of our safety attachments in action visit [www.nationwideplatforms.co.uk/safety-and-innovations](http://www.nationwideplatforms.co.uk/safety-and-innovations)

# Courses

## IOSH Managing Safety



This course is designed for anyone with responsibility for safety management and associated legislation.

### What will I learn?

- How to ensure that safety requirements are appreciated by people employed by line managers
- How to review your own departmental systems for safety
- An understanding of introducing and implementing new controls or changes as appropriate to making your workplace safer
- Play a key role in the development of safety management systems and a safer working culture for your organisation

## Site Management Safety Training Scheme (SMSTS)



This course is aimed at first line managers, foremen, team leaders, supervisors and those who have, or are about to acquire supervisory responsibilities. It provides an introduction to health and safety, welfare and environmental issues, and legal responsibilities relevant to their work.

### What will I learn?

- Manage health and safety on site in accordance with the current legal provisions and within the context of their management or supervisory role
- Develop an understanding of your responsibilities and accountability for site health, safety and welfare
- Recognise that a safe site is efficient, economical and productive
- 2 day refresher course also available

## Site Supervisors Safety Training Scheme (SSSTS)



This course provides an introduction to health and safety, welfare and environmental issues for those requiring an understanding of their legal responsibilities relevant to their work activities.

### What will I learn?

- Effectively communicate site safety messages
- Ensure the welfare and safety of site workers by undertaking inspections and inputting ideas in to risk assessments and controls
- Maintaining records and taking steps to implement safe systems of work
- A greater understanding of the regulations associated with workplace safety
- How to carry out effective site inductions and complete risk assessments, Toolbox Talks and method statements
- Be able to monitor site activities safely and understand the importance of timely intervention

## Lifting - Appointed Person CPCS - A61



This course is for supervisors and managers with a responsibility for lifting operations who have sufficient experience of the use of cranes to meet the requirements specified in British Standard 7121 - Code of Practice for the Safe Use of Cranes.

### What will I learn?

- The legislation controlling crane operations and BS7121/ LOLER Regulations
- The basics of crane drawing
- An understanding of crane stability accessories, planned lifting operations, risk assessments and method statements
- How to understand crane specifications and plan a lift scenario

## CPCS Slinger / Signaller - A40



This course will give you foundation training and assessment in slinging and signalling.

### What will I learn?

- How to establish the weight and dimensions of load and communicate this information to the crane operator
- How to select appropriate lifting tackle and attach and detach it correctly and safely
- How to use clear and unambiguous signals to direct the actions of a crane moving loads of various weights and dimensions
- How to determine the serviceability of lifting accessories, maintain and store them

## Basic Slinging - Slinger Banksman



This course is ideal for novice and experienced delegates wishing to be trained in safe slinging techniques.

### What will I learn?

- Safe slinging techniques, legal responsibilities and safe systems of work
- A thorough understanding of the lifting tackle
- An understanding of the significance of adhering to the safe working load of all equipment involved with a lift

Duration	4 full days or 2 days per week over 2 weeks
Location	At our depot or on-site
Method	Practical and classroom based
Delegate numbers	12 per session max

Duration	5 full days
Location	At our depot or on-site
Method	Practical and classroom based
Delegate numbers	15 per session max

Duration	2 full days
Location	At our depot or on-site
Method	Practical and classroom based
Delegate numbers	15 per session max

Duration	4 full days
Location	On-site
Method	Practical and classroom based
Delegate numbers	8 per session max

Duration	4 full days
Location	On-site
Method	Practical and classroom based
Delegate numbers	3 per session max

Duration	1 full day
Location	On-site
Method	Practical and classroom based
Delegate numbers	3 per session max

# Courses

## Forklift Novice and Refresher

**Nationwide Platforms**  
A LOXAM Company

This industry accredited course is for potential and existing operators who have received no formal instruction, as well as those requiring refresher training.

### What will I learn?

- How to operate and manoeuvre a forklift
- How to correctly assess loads
- Understand the steps required to correctly inspect a forklift
- Responsibilities under the Health and Safety at Work Act, 1974, PUWER 98 & LOLER 98

Duration	1-5 days dependent on experience
Location	On-site
Method	Practical and classroom based
Delegate numbers	3 per session max

## Counterbalance Forklift Truck / Rough Terrain Masted and Reach Truck

**Nationwide Platforms**  
A LOXAM Company

Training designed for novice or experienced delegates of forklift trucks or rough terrain masted and reach trucks.

### What will I learn?

- The safe and efficient uses of a rough terrain masted counterbalance lift truck
- An introduction to trucks and their major constituent parts
- The causes of truck instability and correct methods of use in different applications
- The safe and efficient stacking and de-stacking of various loads is covered in detail including vehicle loading and unloading
- How to carry out truck refuelling
- Responsibilities under the Health and Safety at Work Act, 1974, PUWER 98 & LOLER 98

Duration	Novice delegates - 5 days Experienced delegates - 3 days
Location	On-site
Method	Practical and classroom based
Delegate numbers	3 per session max

## Telescopic Materials Handler

**Nationwide Platforms**  
A LOXAM Company

Designed for novice or experienced delegates in using telescopic material handling vehicles.

### What will I learn?

- The background to the major constituent parts of the truck and their uses
- How to identify the causes of truck instability along with the correct methods of use in different applications
- The understanding of safe and efficient stacking and de-stacking of various loads
- An introduction to various machine attachments, their uses and their effect on truck stability
- Load charts and their importance are also explained, as well as the load moment/ safe load indicator
- Pre-use checks and refuelling procedures are also discussed

Duration	Novice delegates - 5 days Experienced delegates - 3 days
Location	On-site
Method	Practical and classroom based
Delegate numbers	3 per session max

## Asbestos Awareness

**Nationwide Platforms**  
A LOXAM Company

Asbestos awareness training is essential for employees whose work holds the potential to expose them to asbestos.

### What will I learn?

- What asbestos is
- Health hazards of asbestos
- Asbestos in buildings
- Asbestos waste
- Emergency procedures related to asbestos exposure

Duration	Half day
Location	At our depot or on-site
Method	Practical and classroom based
Delegate numbers	12 per session max

## Safe Use of Abrasive Wheels

**Nationwide Platforms**  
A LOXAM Company

Designed for any person who may be required to use an abrasive wheel in the workplace.

### What will I learn?

- An understanding of the legal requirements and responsibilities for the safe use of abrasive wheels
- How to identify a potential hazard and its reasonably foreseeable risks
- How to select the appropriate machinery and PPE required for the work being undertaken
- The key points in selecting appropriate safety equipment that may be used and how to carry out appropriate pre-use checks
- How to be able to correctly mark, store, handle and transport abrasive wheels and any ancillary equipment such as discs
- How to conduct a practical exercise using the appropriate safety equipment, in a safe and efficient manner

Duration	Half day
Location	On-site
Method	Practical and classroom based
Delegate numbers	12 per session max

## Confined Space Awareness

**Nationwide Platforms**  
A LOXAM Company

This City and Guilds accredited training is for the supervisors and managers of operatives who carry out work in confined spaces, as well as operatives who may encounter confined spaces in their work.

### What will I learn?

- A greater understanding of the basic skills and knowledge to supervise and support work in confined spaces
- A complete awareness of the risks and legal obligations involved with working in confined spaces

Duration	1 full day
Location	On-site
Method	Practical and classroom based
Delegate numbers	12 per session max

# Locations

## SCOTLAND&NORTH EAST

### ABERDEEN

Cairnrobin Pipeyard  
Portlethen  
Aberdeen  
AB12 4SB

### DUNDEE

6 Faraday Street  
Dryburgh Industrial Estate,  
Dundee  
DD2 3QQ

### GLASGOW

#### Customer Service Centre

Tel. 0845 600 1490

Unit B East Point  
13 Melford Road  
Righead Ind Estate Bellshill  
Glasgow  
ML4 3LR

### GLASGOW CITY

45 Methil Street  
Glasgow  
G14 0AG

### EDINBURGH

Unit 6D  
Uphall Business Park  
Loaning Hill, Broxburn  
West Lothian  
EH52 5NT

## MIDLANDS & THE NORTH

### BARNSELEY

Unit 3  
The Recovery Centre  
Wakefield Rd  
Barnsley  
S71 1NU

### BIRMINGHAM

#### Customer Service Centre

Tel. 0845 600 1492

Willenhall Road  
Darlaston Wednesbury  
West Midlands  
WS10 8JG

### BLACKBURN

New Trees Garage  
Myerscough Road  
Mellor Brook, Blackburn  
BB2 7LB

### DURHAM

#### Customer Service Centre

Tel. 0845 600 1496

Damson Way  
Dragon Ville Industrial Estate  
Durham  
DH1 2YN

### LEEDS

Old Run Road  
Unit 1, Blackburn Works, Hunslet  
Leeds  
LS10 2AA

### LEICESTER

Unit 10-11  
Arkwright Hill Farm  
Lutterworth Road (A426) Nr Cosby,  
LE9 1RH

### LIVERPOOL

Knowsley Industrial Estate,  
Yardley Road  
Kirkby, Liverpool  
L33 7SS

### NORTH WALES

Castle Close  
Hawarden Industrial Park,  
Hawarden, Deeside  
CH5 3QZ

### NOTTINGHAM

Unit 21  
Hazelford Way  
Newstead  
NG15 0DQ

### SALFORD

2-4 Worrall Street  
Salford, Manchester  
M5 4TH

### SCUNTHORPE

7 Atkinson Way Foxhill Industrial  
Estate, Scunthorpe, DN15 8QJ

### STOCKTON ON TEES

1 Hurricane Court  
Stockton-on-Tees  
TS18 3TL

### TEBAY

Unit 1, The Sidings  
Tebay, Penrith  
CA10 3XR

### TELFORD

8 Halesfield Road Madeley,  
Telford  
TF7 4PL

### WARRINGTON

#### Customer Service Centre

Tel. 0845 600 1491

Unit D, Appleton  
Industrial Park  
Barleycastle Lane  
Appleton Thorn  
Warrington  
WA4 4QT

### WELLINGBOROUGH

Sidegate Lane  
Wellingborough  
Northants  
NN8 1RN

## SOUTH WEST & SOUTH WALES

### AVONMOUTH

Victoria Road Avonmouth  
Bristol  
BS11 9DB

### DIDCOT

Hawksworth  
Industrial Estate  
Didcot, Oxfordshire  
OX11 7HR

### BRISTOL

#### Customer Service Centre

Tel. 0845 600 1494

Cumberland House  
Ashton Gate  
Marsh Road,  
Bristol  
BS3 2NA

### CARDIFF

Castle Works  
East Moors Road  
Cardiff  
CF24 5NN

### LISKEARD

#### Customer Service Centre

Tel. 0845 600 1495

Moorswater Industrial Estate,  
Liskeard  
Cornwall  
PL14 4LB

### SWANSEA

Unit 8 RVB Park  
Carnffrwd Way  
Enterprise Park  
Swansea  
SA6 8QD

### SOUTHAMPTON

Claylands Road  
Industrial Estate  
Bishops Waltham  
SO32 1BH

### TAUNTON

Venture Way  
Priorswood Industrial Estate,  
Taunton  
Somerset  
TA2 8DE

## SOUTH EAST

### BRENTWOOD

Childerditch  
Industrial Park  
Childerditch Hall Drive, Brentwood  
CM13 3HD

### KENT

Plot 1, Thameside Terminal, Cliffe  
Nr Rochester  
Kent  
ME3 7SU

### LONDON EAST

#### Customer Service Centre

Tel. 0845 600 1493

6 Oliver Road  
West Thurrock  
Essex  
RM20 3ED

### LONDON EAST

Plot 4, Riverside Ind Estate, Oliver  
Close  
West Thurrock  
RM20 3EE

### LONDON WEST

Wallingford Road  
Uxbridge  
UB8 2FR

### LONDON WEST

West London Industrial Park  
Iver Lane, Cowley, Uxbridge  
UB8 2JG

### LUTON

#### Customer Service Centre

Tel. 01582 578074

Unit 12 Dencora Way  
Sundon Park Ind Estate, Luton,  
LU3 3HP

### NORWICH

Rookery Farm  
Silver Street, Besthorpe  
Norwich  
NR17 2LD

### PETERBOROUGH

Skylift House  
Newark Road, Peterborough  
PE1 5YD

# Nationwide Platforms

A **LOXAM** Company

**Nationwide Platforms**  
**15 Midland Court**  
**Central Park**  
**Lutterworth**  
**Leicestershire**  
**LE17 4PN**



**0845 601 1032**  
**[nationwideplatforms.co.uk](http://nationwideplatforms.co.uk)**