



Balfour Beatty

MEWP Masterclass Best Practise Update

Linzie Clark – Contract Manager, Balfour Beatty
Matthew Parfitt – Strategic Accounts Team Sales Manager

 **Nationwide
Platforms**
A **LOXAM** Company

Agenda

- 1.0 Background to the Masterclass content
- 2.0 MEWP Selection
 - Options
 - New Solutions
 - Accessibility
- 3.0 GEIS6 Insight
- 4.0 MEWP's & Social Distancing
- 5.0 Balfour Beatty Minimum Standards
- 5.0 MEWP Innovations & Attachment Range
- Questions



1.0 MEWP Masterclass Background

What's it About?



MEWP



People



Safety

How & Why Created?



MEWP Entanglement



Client Engagement



Brainstormed Options

Why We Deliver It



Value Adding



Service



Classroom or Online



Compliance

1.0 MEWP Masterclass Background

Who has benefitted?

**MORGAN
SINDALL**

SKANSKA

Balfour Beatty



BUCKINGHAM
Group Contracting 

 **mace**

 **Interserve**

 **Rentokil**

 **KIER**



KAEFER



Sellafield Ltd

 **Nationwide
Platforms**
A **LOXAM** Company

1.0 MEWP Masterclass Background

Why is this message important for all MEWP users?

	Scissor Lift	Articulating boom	Telescopic boom	Vehicle mounted boom	Rail mounted boom	Deck mounted boom	Totals
Falls from MEWPs	43	14	9	17	0	0	83
MEWP overturned	53	17	5	7	0	0	82
Trapped or crushed by MEWP	26	16	2	2	0	1	47
Injured by MEWP	21	3	1	7	0	0	32
Collapse/ MEWP failure	4	7	6	20	1	0	38
Electrocution	0	3	0	5	0	0	8
Totals	147	60	23	58	1	1	290



Health and Safety Executive

Mobile Elevated Work Platform (MEWP) incident analysis

Prepared by the Health and Safety Laboratory for the Health and Safety Executive 2013

RR961
Research Report

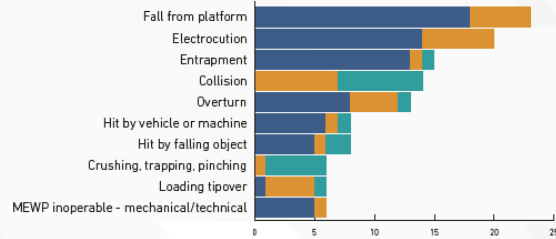
1.0 MEWP Masterclass Background

Why is this message important for all MEWP users?

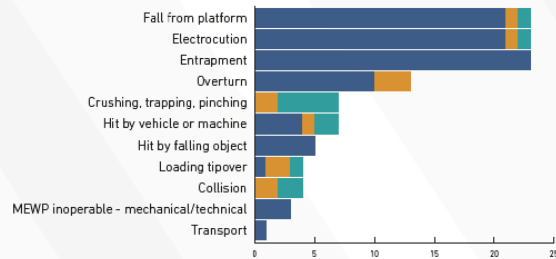
CATEGORY

TOTAL LOST-TIME INCIDENTS INCLUDING FATALITIES BY CATEGORY BY YEAR

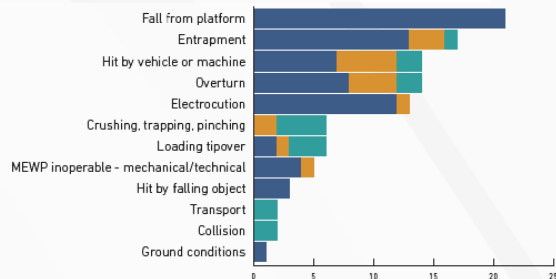
Fatal and lost-time incidents (One or more persons injured that caused the person(s) to not work for one or more days) by category, per year.



2016

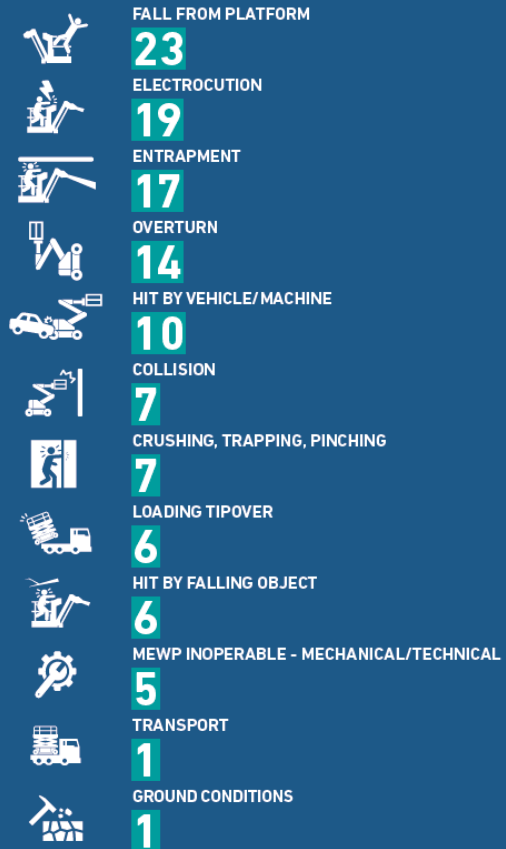


2017



2018

ANNUAL AVERAGE OF LOST-TIME INCIDENTS BY CATEGORY



1.0 MEWP Masterclass Background

Why is this message important for all MEWP users?

- The Health & Safety at work act 1974
- The Work at Height Regulation
- Construction Health & Safety welfare regulations
- Provision Use Work Equipment Regulations (PUWER)
- Lifting Operation Lifting Equipment Regulations (LOLER)
- Strategic Forum - Plant Safety Group - “Avoidance of trapping and crushing”
- UKCG MEWP Tool Kit
- Construction Information Sheet 58 - HSE Guidance (The Selection and Management of MEWPs)/GEIS6
- CPA Groundworks guidance
- BS8460 - Safe use of MEWPs
- RR960
- RR961



2.0 MEWP Selection

Choosing The Right Tool For The Task Is KEY!



Scissors

6,597



Booms

5,623



Low Level

1,043



BlueSky Attachments

1,700

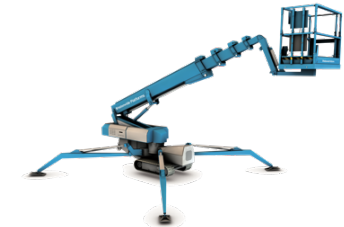


Truck Mounted

294

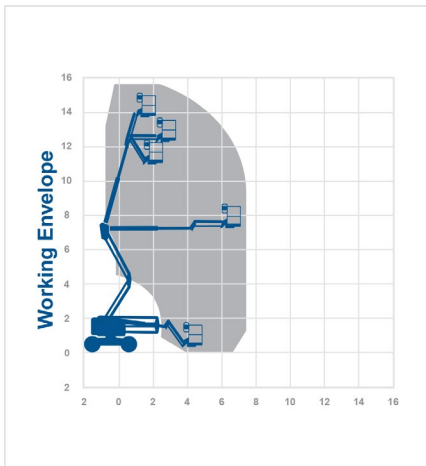
Van Mounts

300



Tracked Booms

131



- Understanding working envelopes
- IPAF Categories
 - Static (1) Vertical (A) Boom (B)
 - 1A
 - 1B
 - Mobile (3) Vertical (A) Boom (B)
 - 3A
 - 3B
- PAV

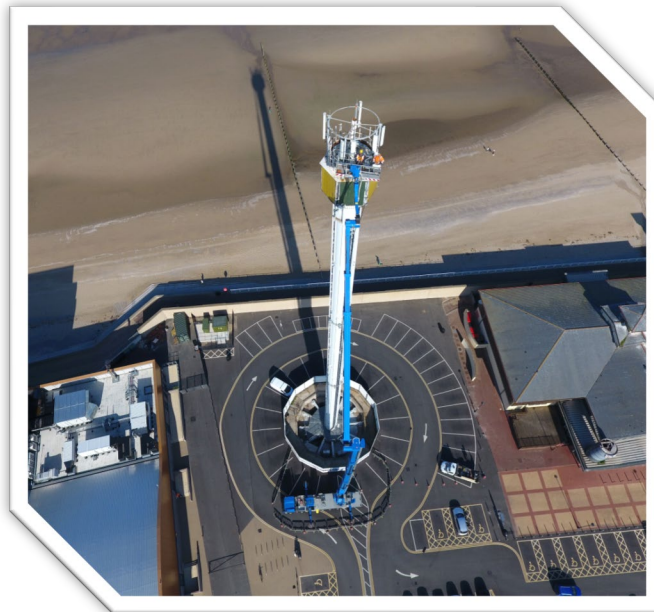
2.0 MEWP Selection

New Options & Solutions



Specialist Solutions

- T48P 48m Palfinger – 400 degree jib rotation!
- ISUZU 13.5m DMAX
- TB31TB – 400kg SWL!
- Bronto's to 90m!



Min & Max Spec MEWP's

- Titan Booms – 1,350kg SWL!
- HC Booms – 50% more SWL!
- SX135HC – 9m jib!
- SX180
- SJ Range

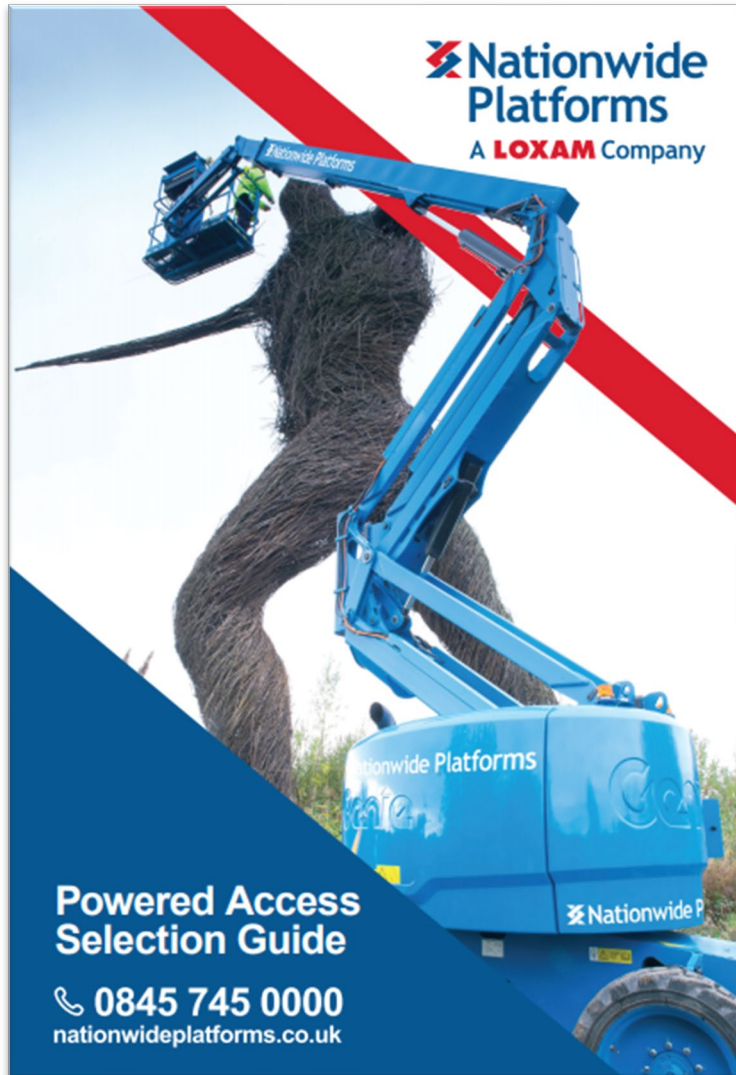


Green Fleet

- Z33
- HR12/HR15/HR21/HR28
- ERT scissors
- Hybrid SJ RT Scissors
- Tier 5 / 3B Engines
- Lithium Ion TB's

2.0 MEWP Selection

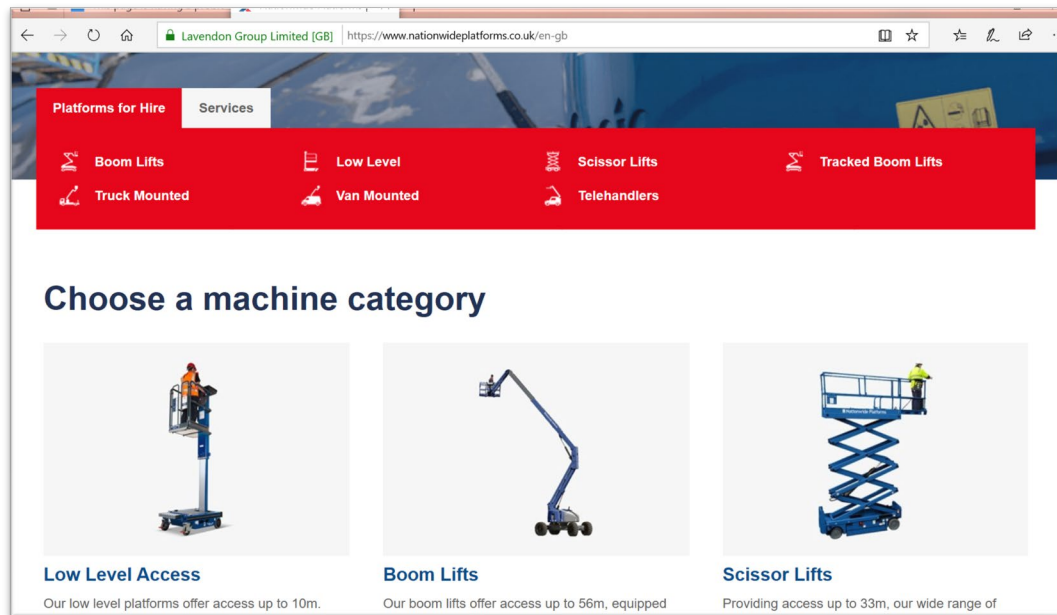
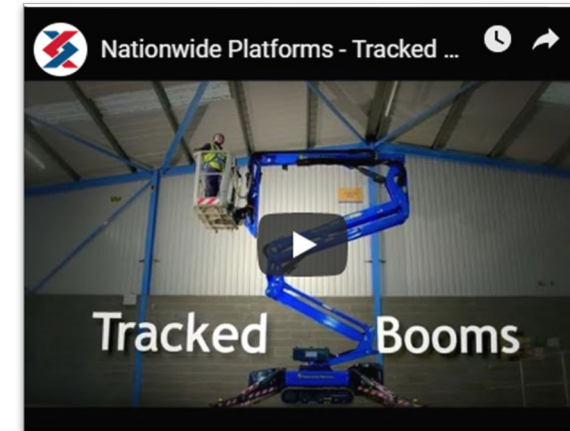
Accessing The Range



Nationwide Platforms
A **LOXAM** Company

Powered Access Selection Guide

0845 745 0000
nationwideplatforms.co.uk



Platform for Hire Limited [GB] https://www.nationwideplatforms.co.uk/en-gb

Platforms for Hire Services

- Boom Lifts
- Low Level
- Scissor Lifts
- Tracked Boom Lifts
- Truck Mounted
- Van Mounted
- Telehandlers

Choose a machine category

- Low Level Access**
Our low level platforms offer access up to 10m.
- Boom Lifts**
Our boom lifts offer access up to 56m, equipped
- Scissor Lifts**
Providing access up to 33m, our wide range of

3.0 GEIS6 Insight

The Selection, Management and Use of Mobile Elevating Work Platforms

- Aimed at those who specify, select, manage or operate MEWPS
- All types of MEWPs are covered by this guidance
- Tells you what you should consider before selecting a MEWP to gain access to work at height and the risks that need to be assessed and managed while the MEWP is in use

HSE Health and Safety Executive

The selection, management and use of mobile elevating work platforms

HSE information sheet

General Information Sheet No 6

Introduction

This information sheet is aimed at those who select, specify, manage and operate mobile elevating work platforms (MEWPs).

It tells you what you should consider before selecting a MEWP to gain access to work at height and the risks that need to be assessed and managed while the MEWP is in use.

All types of MEWPs are covered by this guidance, including ones that are:

- vertical 'scissor' lift;
- self-propelled booms;
- vehicle-mounted booms; and
- trailer-mounted booms.

This information sheet has been produced in consultation with the Health and Safety Executive.

Why

How many lifting devices are working in the area and is there any risk they could collide with each other?

Does any part of the MEWP protrude out of the confines of the work area? Note you must never boom over live traffic.

Are you working within 6 m of an overhead or aerial using a MEWP in excess of 10 m in height? If so, you should contact the aerial manager for permission to work in that air space.

Handling materials

If MEWPs are to be used to install materials, it is essential to know the weight and dimensions of those materials and to properly consider any manual handling and load distribution issues.

Boom-type MEWPs generally have smaller baskets and lower lift capacities than scissor-type MEWPs and their platforms can 'bounce' at height due to the boom structure flexing. This may make them less suitable for use for installing long or heavy materials, or bulky materials that may obstruct the control panel.

Materials should never be balanced on the handrails of a MEWP. Instead, you should consider using a second boom-type MEWP, a scissor lift, a crane or a telehandler of appropriate capacity in conjunction with an appropriate material handling attachment where necessary (see Figure 3). The combination of a MEWP used for access, with other plant to handle the materials, reduces the risk of overturning and minimises the risk of injury due to manual handling.


Remember, all people, tools, materials and material handling devices add to the safe working load of the machine. Never disable the platform overload system. Where the overload alarm has been activated or movement functions have cut out due to overload, remove the overload immediately if possible before attempting to recover the machine.

If you plan the work properly, the need for outreach may be avoided by, for example, preparing or re-tilting the ground conditions in the area directly beneath planned overhead work or by adjusting the work schedule to delay the construction of low level structures until work overhead has been completed.

Exiting the work platform at height

MEWPs are specifically designed to lift people to a position where they can carry out work from the work platform and then return to the starting level. They are not intended to be used to transfer people from one level to another or for people to exit the basket at height.

Figure 3 A MEWP fitted with a material handling device



Exiting the basket at height should be strictly controlled and may only be undertaken where a rigorous risk assessment carried out as part of planning the job indicates that this is the safest and most effective means of accessing a particular location.

Further information can be found in BS 6460:2005 Annex B Guidance on safe systems of work for exiting the work platform at height.

Pre-use checks and machine faults

The trained operator is responsible for carrying out a basic daily/pre-use function check. In addition, there will be basic maintenance required by the manufacturer. Records of these checks should be kept.

The operator should also be fully aware of the procedure their employer expects them to follow should they identify a fault with the MEWP, eg isolate the controls, tag the machine and report the defect to the person in control.

Thorough examination

MEWPs, and any material handling devices must be thoroughly examined at least every six months by a competent person, or at an increased frequency in accordance with an examination scheme drawn up by such a competent person. You should ask to see and retain the report of the thorough examination for the equipment you are going to allow to be used on your site.

Training and certification

It is the employer's responsibility to ensure that all MEWP operators have been adequately trained.

5 of 7 pages

HSE Health and Safety Executive

Mobile Elevated Work Platform (MEWP) incident analysis

Prepared by the Health and Safety Laboratory for the Health and Safety Executive 2013

RR961
Research Report

3.0 GEIS6 Insight

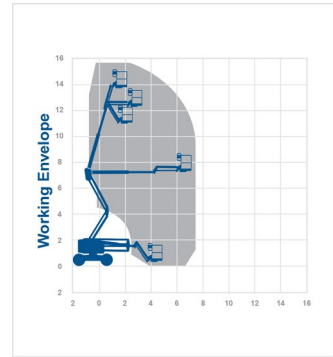
Assessing & Managing The Risk

When selecting the correct MEWP, consideration should be given to:

- Task? Height? Access restrictions? Confined?
- Ground conditions & load bearing
- What height and outreach is required?
- Overhead crush risks? Materials to be carried?

Delivery & Collection

- Time of day? Lighting? Space? Banksmen?
- Logistical booking required?
- Public Highways consideration? TM
- Is the ground capacity suitable? Are there manhole covers or other features that must be avoided?



3.0 GEIS6 Insight

Positioning Before & During Work

Consideration should be given to the following areas;

- Travel to the work location
- Is the ground sufficiently level? (*82 Overturn fatalities / RR961*)
- Ground bearing pressure?
- Does the MEWP need to pass under obstructions?
- Does the MEWP pass over or around obstructions?
- Are segregation/control measures required?
- Are there temporary works which impact on routes?
- Consideration regarding outdoor or indoor working?
- Operator visibility (banksmen?)
- What measures are needed to mitigate?



3.0 GEIS6 Insight

Falling From The Platform

- Falls from platform poses one of the highest risks with MEWP use (*83 fatalities / RR961*)
- Falls can occur because:
 - Boom bounces & catapult
 - Operators overreach
 - Operators stand on guard rails and fall
 - There's impact from other vehicles
 - There's snagging on obstructions
- Where a risk of falling exists operators must be protected by wearing fall protection equipment
 - Full body harness & Restraint Lanyard **OR**
 - A shortened lanyard + energy absorbing device

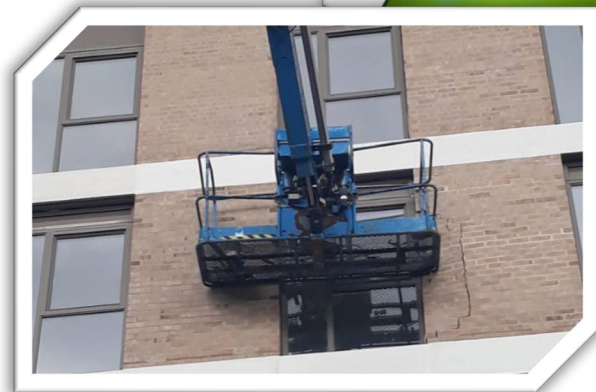
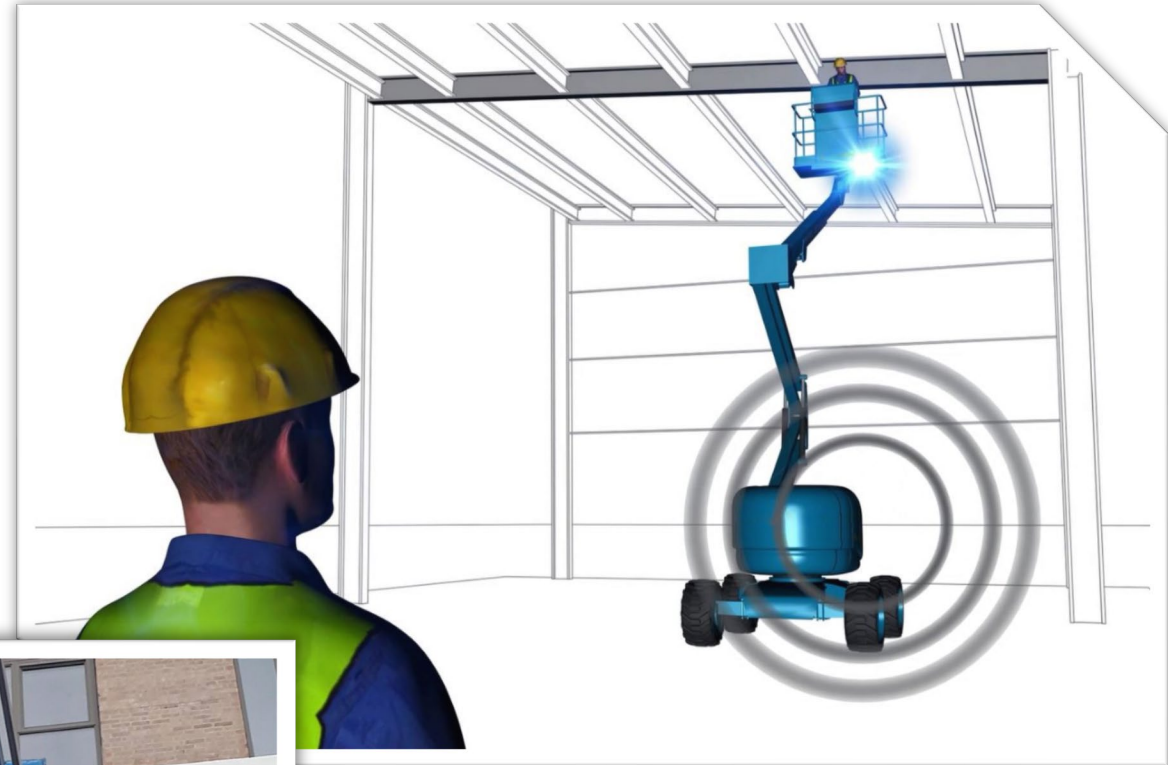


2017 a man fell from 50ft height but was saved because of his harness

3.0 GEIS6 Insight

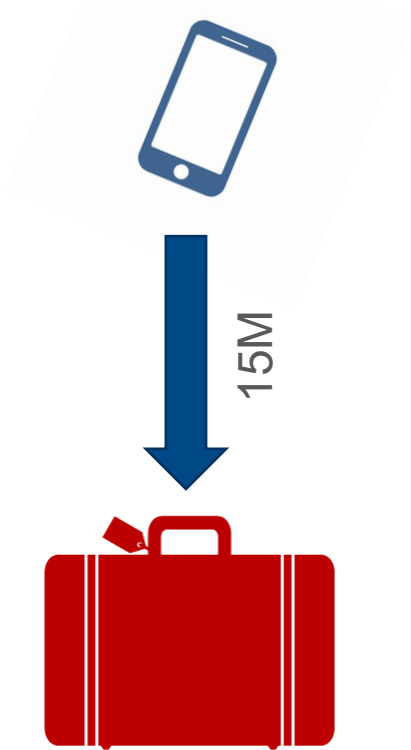
Trapping & Crushing Against Overhead Objects

- Trapping/crushing incidents have led to fatal accidents (*47 globally / 11 UK / RR961*)
- If there are structures where trapping could occur secondary guarding devices should be considered
- Take additional care when manoeuvring up through structures
- Ensure you are familiar with your machine, many are designed to “run on”
- Never crouch over the controls whilst manoeuvring. This is dangerous
- 4/6 minutes to rescue!
Every second counts!

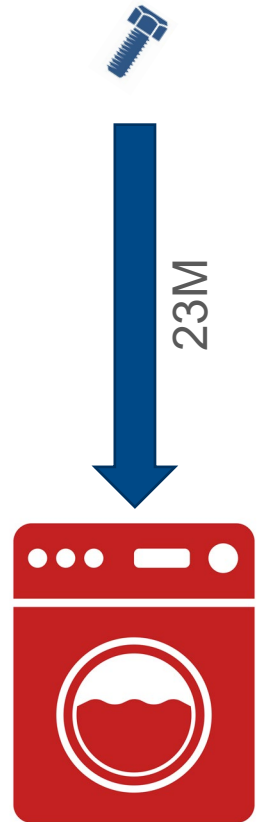


3.0 GEIS6 Insight

Dropped Objects



iPhone = **129g**
Dropped at **15m**
Equals **19.3kg** at impact
(Holiday suitcase)



Bolt = **220g**
Dropped at **23m**
Equivalent to **49.5kg** at impact
(Washing machine)

2014/15: 13 Dropped Objects Fatalities

2014/15: 1,500 Non Fatal Injuries

From the Work at Height Regulations 2005

39. To prevent injury, you must do all that is reasonably practicable to prevent anything falling
40. If not reasonably practicable, you must ensure that no one is injured by anything falling
41. You must ensure that nothing is:
- Thrown or tipped from height if likely to injure
 - Stored in a way where its movement is likely to injure
41. Ensure the high risk work area is clearly indicated (e.g coning)

SOLUTIONS

- Coning
- Tethering
- Netting



3.0 GEIS6 Insight

Handling Materials in MEWP's

- Its essential to know the weight and dimensions & load distribution of the materials to be lifted
- Consider the type of machine in use and the ground it will need to travel over
- Materials should never be balanced on MEWP handrails
- Consider a telehandler or MEWP with appropriate material handling attachment
- Remember materials and MHA add weight to the platforms which must be accounted for
- Plan your work to avoid over reaching



3.0 GEIS6 Insight

Exiting The Platform At Height

- MEWPs are not designed for transferring people from one level to another
- Exiting the basket should only be undertaken following a rigorous risk assessment
- This risk assessment should identify that exiting the platform is the safest and most effective means of accessing a location
- Further information on exiting the platform at height can be found in *BS 8460:2005 COP Safe Use of MEWPS Annex B*

The poster features the IPAF logo and the tagline 'The world authority in powered access'. It includes a diagram showing a scissor lift, a person, and a checkmark. Below the title are icons of various MEWP types. The central image shows workers on a platform with a 'no hand' sign. Text at the bottom explains that MEWPs are not for transferring people and that exiting at height is only permitted after a risk assessment.

IPAF
The world authority
in powered access

EXITING THE PLATFORM AT HEIGHT

www.ipaf.org

Mobile elevating work platforms (MEWPs) are specifically designed to lift people to a position where they can work at height safely within the platform.

MEWPs are not designed to transfer people from one level to another, or for people to exit the platform at height. People should only enter or exit the work platform at access positions at ground level.

There are exceptional cases where MEWPs may be used to gain access to or from a work area at height. Exiting the platform at height may be permitted:

→ If after a robust risk assessment, it can be clearly demonstrated that it is the safest and most effective means of accessing a particular location

3.0 GEIS6 Insight Pre Use Checks

- Trained operators are responsible for carrying out a basic daily / pre-use check
- Operators need to be aware of the company procedures should they find a fault with a machine
- Records of checks should be kept
- E.g. How do you check the tyre pressure on a Z45DJX 15m diesel boom?

(38 Collapse/failure fatalities / RR961)

Thorough Examination

- 6 monthly certificate of examination
- Always within the machine
- Any lifting attachments used must also have a valid thorough examination certificate

MEWP Pre-Use Inspection Check-List

Once checks have been completed operators should sign and date below

These checks should be conducted with reference to the manufacturer's manual		Items checked
VISUAL CHECKS	Documentation	1. Current Examination Certificate (within last six months) 2. Manufacturers' operator manual
	Wheels / Tyres	3. Wheel security (nuts, retainers loose, damaged & missing) 4. Tyre pressure (pneumatic, foam filled or solid)
	Engine / Power Source	5. Cuts, splits (exposed braiding), damaged rims 6. Fluid levels (engine oil, coolant & fuel)
	Hydraulics	7. Battery (electrolyte, security & charging plug condition) 8. Fluid leakage around engine
	Hoses and Cables	9. Hydraulic fluid level 10. Leaks (hoses, pipe connections, rams & cylinders)
	Structure Boom and Scissor Pack	11. Security & condition (cuts, chaffing, bulges) 12. Power track cable trays (free from damage & debris)
	Platform or Cage	13. General condition (damage, misalignment & corrosion) 14. Weld cracks
	Decals and Signage	15. Pins & retainers (security & signs of wear) 16. Canopies, guards, engine covers (security & condition)
		17. Steps for access egress (secure, undamaged & clear) 18. Entrance gate, guard rails & retaining pins
		19. Harness anchor pins 20. Clear of rubbish, debris & obstructions
		21. ID plate, safety, warning & information decals (legible) 22. Controls (identification decals & directional arrows)
		23. Platform loads (SWL, max wind speed & max persons)
	FUNCTION CHECKS	Using Ground and Platform Controls
		26. All switches, joy sticks, controls (move freely & do not stick) 27. Lifting mechanism (raise, lower slew, tele-out & tele-in)
		28. Travel mechanisms (forward, reverse, steer & brakes) 29. Elevated drive speed (reduced or prevented)
		30. Lights, beacons & warning devices 31. Alarms (tilt, descent and travel)
		32. Limit switches (load limiter & cab protection) 33. Pothole protection device (fully deploys & retracts)
		34. Oscillating axle locks, extending axles 35. Accessories, power to platform & extending decks
		36. Jack-legs, stabilisers, outriggers & levelling devices

Operators should sign and date below once checks have been completed

ALL FAULTS & DEFAULTS ARE TO BE REPORTED IMMEDIATELY TO YOUR SUPERVISOR

Only persons who are trained and authorised by their employer should operate this equipment

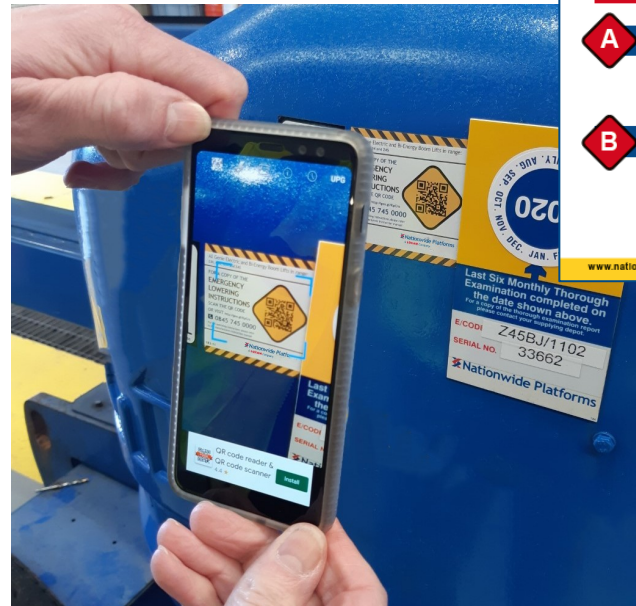
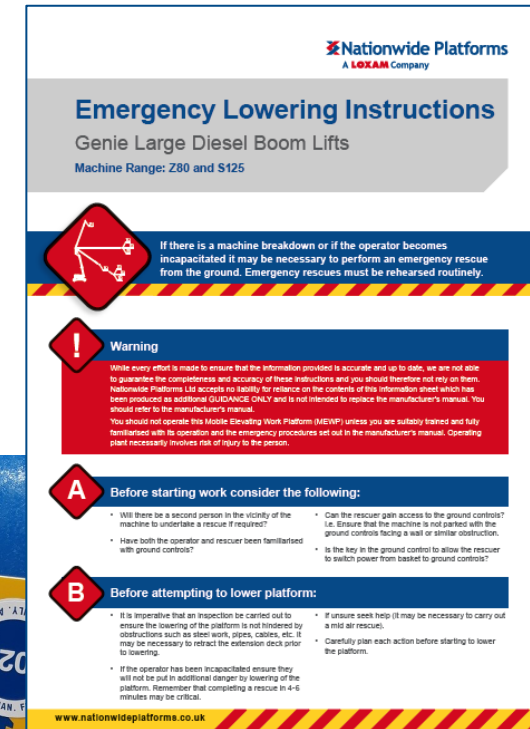
Date Operator Supervisor

3.0 GEIS6 Insight Training & Certification

- Employers responsibility (adequately trained operators)
- Training should be provided for the type of machine used
- Additional training should be considered where additional risks are known (entrapment, removing materials)
- Operators should be trained in the wearing of harnesses/lanyards
- Sites should consider the need for training those who supervise MEWP use

Familiarisation

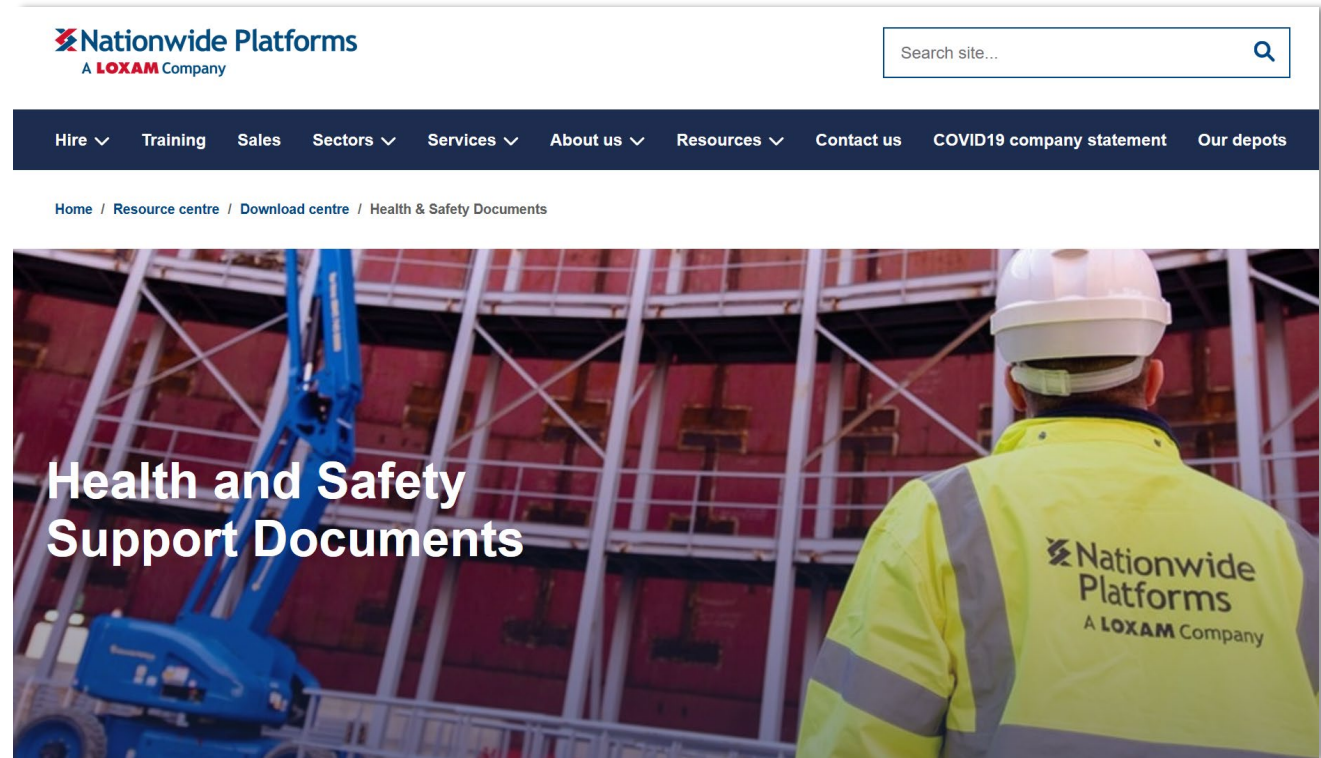
- It's the employer's responsibility to ensure operators are given adequate time on the MEWP
- Documented & Including:
 - Manufacturers instructions/warnings
 - Features specific to that MEWP (inc safety devices)
 - Emergency lowering procedures equally critical (operator and grounds personnel)



3.0 GEIS6 Insight

Other Guidance Available

- Management of MEWP's good practice for rental companies and contractors
- IPAF Guidance on MEWP Security
- MEWP's – Guidance on secondary guarding devices available to reduce the risk of entrapment injury
- Strategic Forum draft guidance on maintenance, inspection & thorough examination
- Strategic Forum BPG for MEWP's – Avoiding Trapping / Crushing Injuries to people in the platform
- New ISO Standards for MEWP Operator Controls 21455:2020



4.0 MEWP's & Social Distancing

By IPAF Category

<https://www.nationwideplatforms.co.uk/en-gb/covid19>

IPAF Cat: 1B



IPAF Cat: 3B

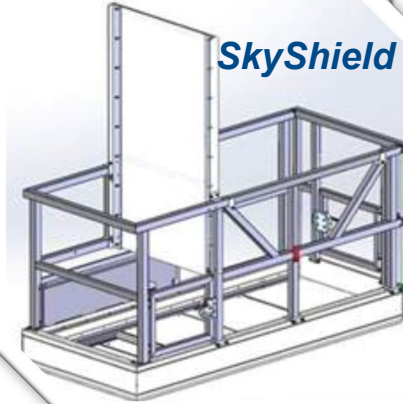


Self Operated
Multi Operator

NEW
TRUCK
MOUNT
SOLUTION!!



SkyShield



IPAF Cat: PAV

Self Operated
Single Operator



IPAF Cat: 3A

ALL: If 2m rule cannot be achieved?








IPAF Cat: 1B



Self Operated & Operated
Multi Operator



BB MEWP Standards Overview

Plant & Equipment Specification MEWP – Tracked Boom Lift	Plant & Equipment Specification MEWP – Scissor Lift	Plant & Equipment Specification MEWP – Self-propelled Boom Lift	Plant & Equipment Specification MEWP – Vehicle Mounted	Plant & Equipment Specification MEWP – Push Around Vertical (PAV)
<p>Typical Illustration</p>  <p>Mandatory</p> <p>Plant - general</p> <ul style="list-style-type: none"> Must be compliant with EC Machinery Directive 2006/42/EC and supplied with a declaration of conformity Evidence of Pre-hire inspection Evidence of regular inspection plus "next service and or inspection due" date sticker Operator instructions must be on the machine All safety decals in place and legible <p>Plant - specific</p> <ul style="list-style-type: none"> MEWP power source/engine type as requisitioned 6 monthly LOLER thorough examination certificate Must be compliant with BS EN 280 Full Handover Instructions for the operator including emergency lowering familiarisation Flashing amber beacon Travel movement alarm to be fitted working and audible Isolation switch with key Operating control functions clearly marked A daily/weekly maintenance schedule must be provided The machine must be suitable for the location (indoor/outdoor) Power Failure Safe Lowering System SWL displayed in platform Maximum permitted wind-speed for safe operations must be displayed Outrigger/track loading details should be available. Must have secondary activation capability to prevent involuntary movement (Foot switch, deadman button etc.) Keys must remain in the ground control key switch at all times when the scissor is in use <p>For any clarification or more information regarding this type of please contact the Sheffield Centre of Excellence on 0870 844 4888.</p>	<p>Typical illustration</p>  <p>Mandatory Requirements</p> <p>Plant - general</p> <ul style="list-style-type: none"> Must be compliant with EC Machinery Directive 2006/42/EC and supplied with a declaration of conformity Evidence of Pre-hire inspection Evidence of regular inspection plus "next service and or inspection due" date sticker Operator instructions must be on the machine All safety decals in place and legible <p>Plant - specific</p> <ul style="list-style-type: none"> MEWP power source/engine type as requisitioned 6 monthly LOLER thorough examination certificate Must be compliant with BS EN 280 Full Handover Instructions for the operator including emergency lowering training Flashing amber beacon Travel movement alarm to be fitted working and audible Isolation switch with key Operating control functions clearly marked A daily/weekly maintenance schedule must be provided Maximum gradient for safe operation must be displayed The machine must be suitable for the location (Indoor/outdoor) Power Failure Safe Lowering System SWL displayed in platform Maximum permitted wind-speed for safe operations must be displayed Outrigger/wheel loading details provided and ground bearing pressure required All scissor lifts must have shrouded controls which limit the risk of entrapment/crushing through sustained involuntary operation Keys must remain in the ground control key switch at all times when the scissor is in use <p>For any clarification or more information regarding this type of equipment please contact the Sheffield Centre of Excellence on 0870 8444888.</p>	<p>Typical illustration</p>  <p>Mandatory Requirements</p> <p>Plant - general</p> <ul style="list-style-type: none"> Must be compliant with EC Machinery Directive 2006/42/EC and supplied with a declaration of conformity Evidence of Pre-hire inspection Evidence of regular inspection plus "next service and or inspection due" date sticker Operator instructions must be on the machine All safety decals in place and legible <p>Plant - specific</p> <ul style="list-style-type: none"> Must be compliant with BS EN 280 Power source/engine type as requisitioned 6 monthly LOLER thorough examination certificate Full Handover Instructions for the operator including emergency lowering training Flashing amber beacon Travel movement alarm to be fitted working and audible Isolation switch with key Operating control functions clearly marked A daily/weekly maintenance schedule must be provided Keys must remain in the ground control key switch at all times when the boom is in use Direction of travel must be clearly indicated Maximum gradient for safe operation must be displayed The machine must be suitable for the location (Indoor/outdoor) Power Failure Safe Lowering System SWL displayed in platform Maximum permitted wind-speed for safe operations must be displayed Outrigger/wheel loading details provided and ground bearing pressure required Must have secondary activation capability to prevent involuntary movement (Foot switch, deadman button etc.) Must have secondary guarding device which ceases all movements once activated to limit the risk of entrapment/crushing. It should also emit a visual & audible alarm upon activation Harness anchorage points in boom platform <p>For any clarification or more information regarding this type of equipment please contact the Sheffield Centre of Excellence on 0870 8444888.</p>	<p>Typical illustration</p>  <p>Mandatory Requirements</p> <p>Plant - general</p> <ul style="list-style-type: none"> Must be compliant with EC Machinery Directive 2006/42/EC and supplied with a declaration of conformity Evidence of Pre-hire inspection Evidence of regular inspection plus "next service and or inspection due" date sticker Operator instructions must be on the machine All safety decals in place and legible <p>Plant - specific</p> <ul style="list-style-type: none"> When working on the Public Highway, Chapter 8 compliant beacons, reflective chevrons and "Highway/Motorway Maintenance" signage Supplied with lights and if used on Public Highway compliance with C&U regulations – (VED registered, working Lights, indicators, registration plate's front & rear etc.) Must be as requisitioned unless agreed otherwise Compliant with FORS (minimum Bronze spec) Compliant with CLOCS standard Live tracking system Seat belts must be fitted and operational Mirrors (including Class V & VI on vehicles >=7.5t) CCTV to satisfy 1m high at 1m distance visibility criteria Audible reversing alarm Wheel nut indicators Labelled each side with tyre inflation pressure and wheel nut torque figure Isolation switch with key Locking doors with key Cab steps and handles painted high visibility yellow ensuring 3 points of contact is achievable Locking caps/covers to fuel and all other tanks Where access is required at height for security & maintenance purposes, suitable system must be in <p>For any clarification or more information regarding this type of equipment please contact the Sheffield Centre of Excellence on 0870 8444888.</p>	<p>Typical illustration</p>  <p>Mandatory Requirements</p> <p>Plant - general</p> <ul style="list-style-type: none"> Must be compliant with EC Machinery Directive 2006/42/EC and supplied with a declaration of conformity Evidence of Pre-hire inspection Evidence of regular inspection plus "next service and or inspection due" date sticker Operator instructions must be with the machine All safety decals in place and legible <p>Plant - specific</p> <ul style="list-style-type: none"> Must be compliant with BS EN 280 Must be as requisitioned unless agreed otherwise 6 monthly LOLER thorough examination certificate Full Handover Instructions for the operator including emergency lowering training Functions to be able to be isolated using a key or physical lock as applicable Operating control functions must be clearly marked A daily/weekly maintenance schedule must be provided Maximum gradient for safe operation must be displayed Gradient indicator must be present Powered machines must be fitted with an audible tilt alarm Power Failure Safe Lowering System must be present where applicable SWL displayed in platform Isolation switch with key for powered MEW/PD Maximum permitted wind-speed for safe operations must be displayed <p>Operator - general</p> <ul style="list-style-type: none"> Attend full induction prior to starting work Be briefed on the site specific Plant, Vehicle and People Management Plan (PVPMP) and check for overhead obstructions and hazards Be signed onto the appropriate Safe System of Work documentation for the task Complete Pre-use check sheet-Inspection Comply with Pre-use and Defect Reporting System Have a competency assessment prior to being put to work – be familiar with machine Report all unsafe conditions Abide by specific BB Company policies, procedures and permits Always operate/use the equipment in accordance with manufacturer's instructions / recommendations <p>Plant - specific</p> <ul style="list-style-type: none"> Must be able to demonstrate they are fit for work Operators must be competent and hold a valid industry recognised competence card – as per BB competency standard Full site-defined PPE must be worn - loose fitting clothing should be avoided to prevent inadvertent operation of controls Familiarisation training for the emergency recovery procedure from the ground Power must be turned off if approached by others and keys removed from the ignition before leaving the plant unattended for any reason Shall stop work if any unauthorised/unsupervised personnel enter their immediate work area Operator to mount and dismount machine using fixed access arrangements and always facing the machine using 3 points of contact Emergency lowering mechanism acceptable and exercise complete <p>Core requirements</p> <p>A push around, elevating work platform either 110v / battery powered or manual wind up to a maximum working height of 9.5m, for use both internally or externally.</p> <p>For any clarification or more information regarding this type of equipment please contact the Sheffield Centre of Excellence on 0870 8444888.</p>

BB MEWP Standards Overview

As Standard

Regular overview of MEWP Standards

Compliant Shrouding

Flashing Beacon

Travel alarm

Instruction Manual

SWL displayed & all decal legible

Test Certificate and sticker for LOLER

PDI/Last Service - Sticker

Secondary Guarding

Handover/Familiarisation

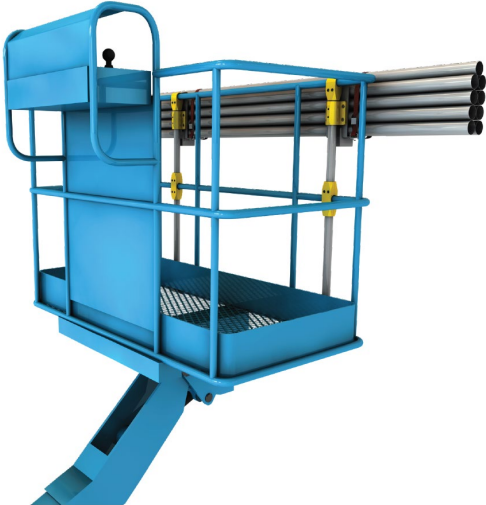
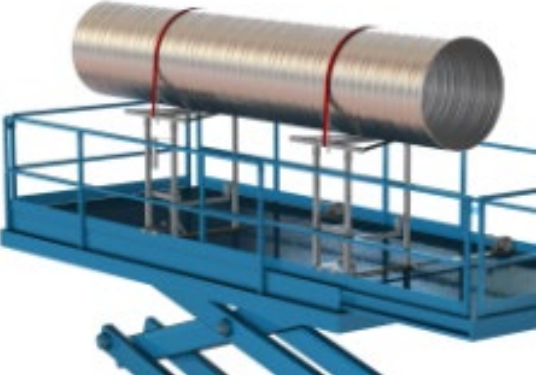
Over and Above on all BB direct hires

PCS, SkySentry, QR Codes for Emergency Lowering, Material Handling options, Site Surveys, Tool box talks,



6.0 MEWP Innovations & Attachments

Material Handling



6.0 MEWP Innovations & Attachments

Preventing Entrapment



Preventing Dropped Objects



Preventing Unauthorised Use



Specials





**Book your innovation session's
directly with Linzie Clark**

Linzie.clark@nationwideplatforms.co.uk

07736828068

QUESTIONS.....