

HR15NB | Boom Lift

Working height Horizontal outreach

Closed length	5.94m
Closed height	1.95m
Closed width	1.50m
Platform size	1.50m x 0.70m
Rotation	360°
Max SWL	225kg
Weight	6000kg

15.4m
9.6m

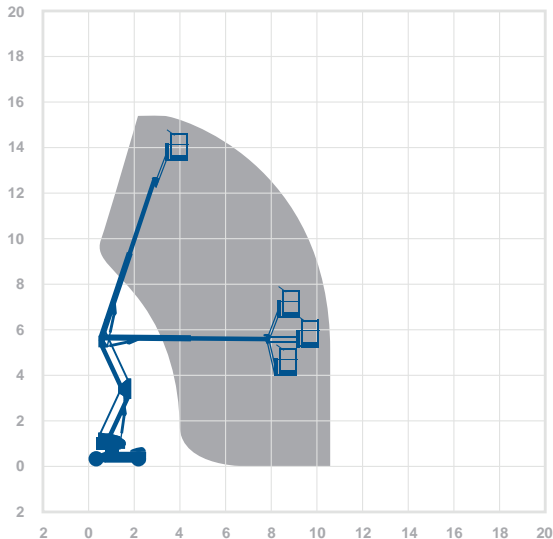
Alternative machines

HR15NBS – Z45BJ

Manufacturer

Niftylift

Working envelope



15.4m 9.6m

Standard features



Optional extras



0345 745 0000

nationwideplatforms.co.uk

**Nationwide
Platforms**
A **LOXAM** Company

AMWP11.5-8100 | Boom Lift

The working envelope with height/reach indicator provides a quick visual reference to assist your equipment selection.

If you are unsure about any aspect of this piece of equipment, or would like more information to assist with your selection, please call our expertly trained staff on **0345 745 0000**

Working height



Horizontal outreach



AMWP11.5-8100 Boom Lift	
Working height Horizontal outreach Closed length Closed height Closed width Rotation Platform height Max SWL Weight Deck size	11.2m 3m 2.55m 1.95m 1m 345° 5.2m 200kg 2000kg 0.62m x 0.875m
Alternative machines Star10 Star10A Manufacturer Dight	
Working envelope 	
Standard features 	
Optional extras 	
0345 745 0000 nationwideplatforms.co.uk	

Working height

- Battery power
- Diesel power
- Lithium battery
- Hybrid power
- Dual fuel option
- Gas power option
- Rough terrain (2 wheel drive)
- Rough terrain (4 wheel drive)

- IPAF licence type
- IPAF licence type
- IPAF licence type
- IPAF licence type
- IPAF licence type
- Tracked
- Mast boom
- Articulating boom

- Straight telescopic boom
- 1R tyres
- Outrigger legs
- Maximum people in cage*
- Push around vehicles
- Operator powered
- Indoor use only
- Indoor/Outdoor

- Self drive
- J1B rotation
- IPAF driving licence type
- Power to platform
- Generator

Working height

- SkySiren®
- SkySiren® PCS
- SkySentry®
- SkyRak®

- SkyRakPlus®
- SkyRakBoom®
- SkyRakMulti™
- SkyTel™

- SkyRakEdge™
- SkyShield™
- SkyScreen™
- Material handling attachments

- Generator
- Camera pod
- Circular camera cage
- Wendy lighting frame

*The number refers to indoor or outdoor uses. Call us for details.

Please note that all technical information referred to in this document is intended for guidance purposes only and does not act as a replacement for the PD06FW11.5-8100R001XSPH01MUKGHVFK0GEHJHIGWRSRWR/SODFLQRIGCHURHSRLELWFDEHDFHSHWGLQKHMCWBWWWKGRFRHQWFRQDLEB00PLR0GDDWDWBWLGLIHHQWBPWBWLQKPD0DFW11.5-8100R001XSPH01MUKGHV