

# 460SJHCS | Boom Lift

<b>Working height</b>	<b>16.1m</b>
<b>Horizontal outreach</b>	<b>12.2m</b>
Closed length	8.91m
Closed height	2.47m
Closed width	2.31m
Platform size	2.44m x 0.91m
Rotation	360°
Max SWL	454kg
Weight	9306kg

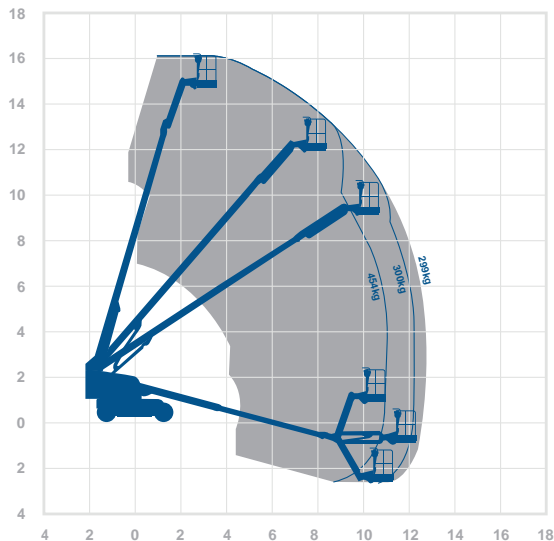
## Alternative machines

S45XCS

## Manufacturer

JLG

## Working envelope



16.1m 12.2m

## Standard features



## Optional extras



**0345 745 0000**

[nationwideplatforms.co.uk](http://nationwideplatforms.co.uk)

**Nationwide  
Platforms**  
A **LOXAM** Company

# QHW/DQLQWKBGW SHFL£DWLRQHW

2022

The working envelope with height/reach indicator provides a quick visual reference to assist your equipment selection.

If you are unsure about any aspect of this piece of equipment, or would like more information to assist with your selection, please call our expertly trained staff on **0345 745 0000**

## #LJW/DQRW/HDFK

Working height  Horizontal outreach

AMWP11.5-8100 | Boom Lift

<b>Working height</b>	11.2m	<b>Alternative machines</b>
<b>Horizontal outreach</b>	3m	Star10
Closed length	2.53m	Star10A
Closed height	1.96m	<b>Manufacturer</b>
Closed width	1m	Dejag
Rotation	340°	
Platform height	0.3m	
Max SWL	200kg	
Weight	2200kg	
Deck size	0.62m x 0.87m	

**Working envelope**

**Standard features**

- 

**Optional extras**

-

**0345 745 0000**  
nationwideplatforms.co.uk

## WVDQDGIHDWV

- |                               |                   |                          |                           |
|-------------------------------|-------------------|--------------------------|---------------------------|
| Battery power                 | IPAF licence type | Straight telescopic boom | Self drive                |
| Diesel power                  | IPAF licence type | 1R2D10 tyres             | J1B rotation              |
| Lithium battery               | IPAF licence type | Outrigger legs           | IPAF driving licence type |
| Hybrid power                  | IPAF licence type | Maximum people in cage*  | Power to platform         |
| Dual fuel option              | IPAF licence type | Push around vehicles     | Generator                 |
| Gas power option              | Tracked           | Operator powered         |                           |
| Rough terrain (2 wheel drive) | Mast boom         | Indoor use only          |                           |
| Rough terrain (4 wheel drive) | Articulating boom | Indoor/Outdoor           |                           |

## 2SWLRQOHWDV

- |               |              |                               |                      |
|---------------|--------------|-------------------------------|----------------------|
| SkySiren®     | SkyRakPlus®  | SkyRakEdge™                   | Generator            |
| SkySiren® PCS | SkyRakBoom®  | SkyShield™                    | Camera pod           |
| SkySentry®    | SkyRakMulti™ | SkyScreen™                    | Circular camera cage |
| SkyRak®       | SkyTel™      | Material handling attachments | Wendy lighting frame |

\*The number refers to indoor or outdoor uses. Call us for details.

Please note that all technical information referred to in this document is intended for guidance purposes only and does not act as a replacement for the PD0FWM0HFL£DWLRQHWKSPH0MUKGH£FR0GEHBIHUGWRSURWRSODFLOR£CHURHSR£LELWFD£HDFFSWHGLQW HM0W0VW0W0GRFRHQWFR0DLD000PLR£GD0DWB0WLG0LIH0W0BP0W0LQ0KPD0DFW0HFL£DWLRQHWKSPH0MUKGHV