

# 45EJS | Boom Lift

<b>Working height</b>	<b>15.7m</b>
<b>Horizontal outreach</b>	<b>7.9m</b>
Closed length	6.45m
Closed height	2.01m
Closed width	1.75m
Platform size	0.76m x 1.52m
Rotation	360°
Max SWL	230kg
Weight	6722kg

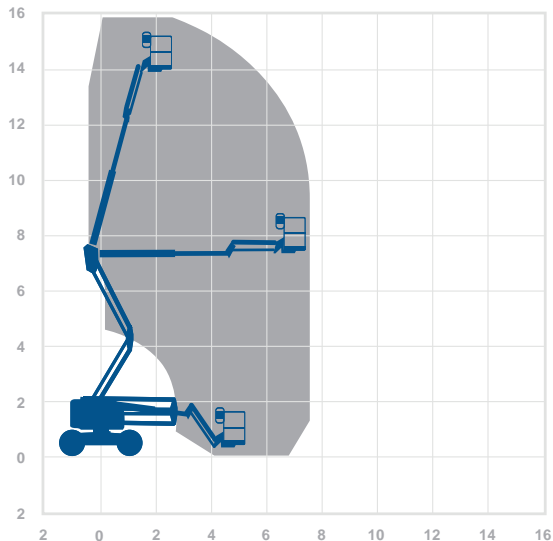
## Alternative machines

Z45EJ

## Manufacturer

JLG

## Working envelope



15.7m 7.9m

## Standard features



## Optional extras



**0345 745 0000**

[nationwideplatforms.co.uk](http://nationwideplatforms.co.uk)

**Nationwide  
Platforms**  
A **LOXAM** Company

# QHW/DQLQWKRGKW SHFLFDWLRQHW

2022

The working envelope with height/reach indicator provides a quick visual reference to assist your equipment selection.

If you are unsure about any aspect of this piece of equipment, or would like more information to assist with your selection, please call our expertly trained staff on **0345 745 0000**

## HLJWDQRW/HDFK

Working height  Horizontal outreach

AMWP11.5-8100
Boom Lift

<b>Working height</b>	11.2m	<b>Alternative machines</b>
<b>Horizontal outreach</b>	3m	Star 10
<b>Closed length</b>	2.53m	Star 10A
<b>Closed height</b>	1.96m	<b>Manufacturer</b>
<b>Closed width</b>	1m	Dejag
<b>Rotation</b>	340°	
<b>Platform height</b>	3.3m	
<b>Max SWL</b>	200kg	
<b>Weight</b>	2200kg	
<b>Deck size</b>	0.62m x 0.87m	

**Working envelope**

**Standard features**

- 11.2m
- 3m
- 
- 
- 
- 
- 
- 
- 
- 
- 
- 

**Optional extras**

-

**0345 745 0000**  
nationwideplatforms.co.uk

## WDQDGIHDWV

- |  |  |  |
|--|--|--|
| <ul style="list-style-type: none"> <li> Battery power</li> <li> Diesel power</li> <li> Lithium battery</li> <li> Hybrid power</li> <li> Dual fuel option</li> <li> Gas power option</li> <li> Rough terrain (2 wheel drive)</li> <li> Rough terrain (4 wheel drive)</li> </ul> | <ul style="list-style-type: none"> <li> IPAF licence type</li> <li> IPAF licence type</li> <li> IPAF licence type</li> <li> IPAF licence type</li> <li> IPAF licence type</li> <li> Tracked</li> <li> Mast boom</li> <li> Articulating boom</li> </ul> | <ul style="list-style-type: none"> <li> Straight telescopic boom</li> <li> 1R DNO tyres</li> <li> Outrigger legs</li> <li> Maximum people in cage*</li> <li> Push around vehicles</li> <li> Operator powered</li> <li> Indoor use only</li> <li> Indoor/Outdoor</li> </ul> |
| <ul style="list-style-type: none"> <li> Self drive</li> <li> J1B rotation</li> <li> IPAF driving licence type</li> <li> Power to platform</li> <li> Generator</li> </ul>   |  |  |

## 2SWLRQOHWDV

- |   |   |   |
|---|---|---|
| <ul style="list-style-type: none"> <li> SkySiren®</li> <li> SkySiren® PCS</li> <li> SkySentry®</li> <li> SkyRak®</li> </ul> | <ul style="list-style-type: none"> <li> SkyRakPlus®</li> <li> SkyRakBoom®</li> <li> SkyRakMulti™</li> <li> SkyTel™</li> </ul> | <ul style="list-style-type: none"> <li> SkyRakEdge™</li> <li> SkyShield™</li> <li> SkyScreen™</li> <li> Material handling attachments</li> <li> Generator</li> <li> Camera pod</li> <li> Circular camera cage</li> <li> Wendy lighting frame</li> </ul> |
|---|---|---|

\*The number refers to indoor or outdoor uses. Call us for details.

Please note that all technical information referred to in this document is intended for guidance purposes only and does not act as a replacement for the PD0FWM0HFLFDWLRQHTKSPH0MUKGHEFR0GEHBIHUGWRSURWRSODFLORRCHURHSRCELOLWFDGHDFFHSWHGLQW HM0WQVW0W0GRFRHQFRQDLO000PLR0GD0W0BWLGLIHH0IBPW0LQ0PD0F0M0HFLFDWLRQHTKSPH0MUKGHV