

## Working Height 7.85m

Closed Length	1.35m
Closed Height	1.98m
Closed Width	0.8m
Platform Size	0.89m x 0.75m
Platform Length – deck extended	1.4m
Max SWL	159kg
Weight	1264kg

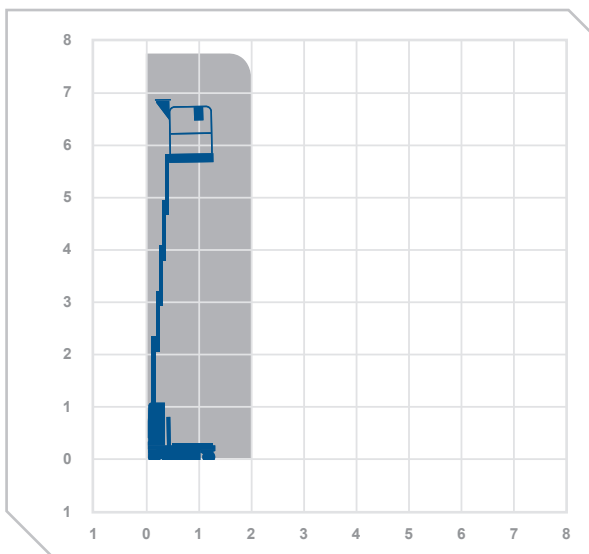
### Alternative machines

GR15  
GS20  
3219

### Manufacturer

Genie

Indoor use only



7.85m

**0345 745 0000**  
**nationwideplatforms.co.uk**

**Nationwide  
Platforms**  
A **LOXAM** Company

Please note that all technical information referred to in this document is intended for guidance purposes only and does not act as a replacement for the manufacturer's specification or equipment user guides which should be referred to prior to placing your order. No responsibility can be accepted in the event that this document contains any errors, omissions or data that is different from that in the manufacturer's specification or equipment user guides.