

# 860SJHCS | Boom Lift

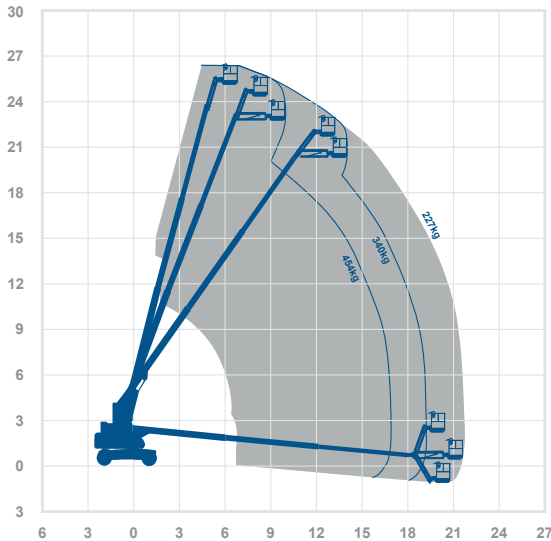
<b>Working height</b>	<b>28.2m</b>
<b>Horizontal outreach</b>	<b>22.8m</b>
Closed length	12.19m
Closed height	3.05m
Closed width	2.50m
Platform size	2.44m x 0.91m
Rotation	Continuous
Max SWL	454kg
Weight	17255kg

## Alternative machines

## Manufacturer

JLG

## Working envelope



28.2m 22.8m

## Standard features



## Optional extras



**0345 745 0000**

[nationwideplatforms.co.uk](http://nationwideplatforms.co.uk)

**Nationwide  
Platforms**  
A **LOXAM** Company

# Understanding this Product Specification Sheet

This product specification sheet is designed to help you better understand the capabilities and key features of the piece of equipment and whether it will meet your requirements.

The working envelope with height/reach indicator provides a quick visual reference to assist your equipment selection.

If you are unsure about any aspect of this piece of equipment, or would like more information to assist with your selection, please call our expertly trained staff on **0345 745 0000**

## Height and outreach

Working height Horizontal outreach

AMWP11.5-8100 | Boom Lift

<p><b>Working height</b> 11.2m  <b>Horizontal outreach</b> 3m</p> <p>Closed length 2.53m                  Closed height 9.09m                  Closed width 1m                  Rotation 340°                  Platform height 9.2m                  Max DPEL 200kg                  Weight 2000kg                  Deck size 0.62m x 0.87m</p>	<p><b>Alternative machines</b></p> <p>Star10                  Star10A                  Star10K</p> <p><b>Manufacturer</b></p> <p>Dingli</p>
---	---

**Working envelope**

11.2m      3m

**Standard features**

**Optional extras**

**0345 745 0000**  
nationwideplatforms.co.uk

**Nationwide Platforms**  
A LINAK Company

## Standard features

- |  |  |   |  |
|--|--|---|--|
| <ul style="list-style-type: none"> <li> Battery power</li> <li> Diesel power</li> <li> Lithium battery</li> <li> Hybrid power</li> <li> Dual fuel option</li> <li> Gas power option</li> <li> Rough terrain (2 wheel drive)</li> <li> Rough terrain (4 wheel drive)</li> </ul> | <ul style="list-style-type: none"> <li> IPAF licence type</li> <li> IPAF licence type</li> <li> IPAF licence type</li> <li> IPAF licence type</li> <li> IPAF licence type</li> <li> Tracked</li> <li> Mast boom</li> <li> Articulating boom</li> </ul> | <ul style="list-style-type: none"> <li> Straight telescopic boom</li> <li> Non-marking tyres</li> <li> Outrigger legs</li> <li> Maximum people in cage*</li> <li> Push around vehicles</li> <li> Operator powered</li> <li> Indoor use only</li> <li> Indoor/Outdoor</li> </ul> | <ul style="list-style-type: none"> <li> Self drive</li> <li> J1B rotation</li> <li> IPAF driving licence type</li> <li> Power to platform</li> <li> Generator</li> </ul> |
|--|--|---|--|

## Optional extras

- |   |   |  |   |
|---|---|--|---|
| <ul style="list-style-type: none"> <li> SkySiren®</li> <li> SkySiren® PCS</li> <li> SkySentry®</li> <li> SkyRak®</li> </ul> | <ul style="list-style-type: none"> <li> SkyRakPlus®</li> <li> SkyRakBoom®</li> <li> SkyRakMulti™</li> <li> SkyTel™</li> </ul> | <ul style="list-style-type: none"> <li> SkyRakEdge™</li> <li> SkyShield™</li> <li> SkyScreen™</li> <li> Material handling attachments</li> </ul> | <ul style="list-style-type: none"> <li> Generator</li> <li> Camera pod</li> <li> Circular camera cage</li> <li> Wendy lighting frame</li> </ul> |
|---|---|--|---|

\*The number refers to indoor or outdoor uses. Call us for details.

Please note that all technical information referred to in this document is intended for guidance purposes only and does not act as a replacement for the manufacturer's specification or equipment user guides which should be referred to prior to placing your order. No responsibility can be accepted in the event that this document contains any errors, omissions or data that is different from that in the manufacturer's specification or equipment user guides.