

# H800AJ | Boom Lift

## Working height Horizontal outreach

Closed length	11.13m
Closed height	3.00m
Closed width	2.49m
Platform size	1.83m x 0.91m
Rotation	Continuous
Max SWL	230kg
Weight	16110kg

**26.4m**  
**15.8m**

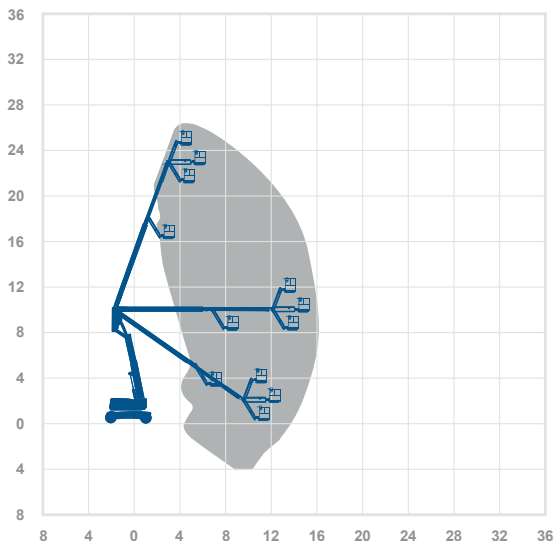
## Alternative machines

HR28H

## Manufacturer

JLG

## Working envelope



26.4m 15.8m

## Standard features



## Optional extras



**0345 745 0000**

[nationwideplatforms.co.uk](http://nationwideplatforms.co.uk)

**Nationwide  
Platforms**  
A **LOXAM** Company

# Understanding this Product Specification Sheet

This product specification sheet is designed to help you better understand the capabilities and key features of the piece of equipment and whether it will meet your requirements.

The working envelope with height/reach indicator provides a quick visual reference to assist your equipment selection.

If you are unsure about any aspect of this piece of equipment, or would like more information to assist with your selection, please call our expertly trained staff on **0345 745 0000**

## Height and outreach

Working height Horizontal outreach

**AMWP11.5-8100** | Boom Lift

<table style="width: 100%; border-collapse: collapse;"> <tr><td>Working height</td><td style="text-align: right;">11.2m</td></tr> <tr><td>Horizontal outreach</td><td style="text-align: right;">3m</td></tr> <tr><td>Closed length</td><td style="text-align: right;">2.85m</td></tr> <tr><td>Closed height</td><td style="text-align: right;">1.99m</td></tr> <tr><td>Closed width</td><td style="text-align: right;">1m</td></tr> <tr><td>Rotation</td><td style="text-align: right;">360°</td></tr> <tr><td>Platform height</td><td style="text-align: right;">0.2m</td></tr> <tr><td>Max D10</td><td style="text-align: right;">200kg</td></tr> <tr><td>Weight</td><td style="text-align: right;">2000kg</td></tr> <tr><td>Deck size</td><td style="text-align: right;">0.62m x 0.87m</td></tr> </table>	Working height	11.2m	Horizontal outreach	3m	Closed length	2.85m	Closed height	1.99m	Closed width	1m	Rotation	360°	Platform height	0.2m	Max D10	200kg	Weight	2000kg	Deck size	0.62m x 0.87m	<p><b>Alternative machines</b></p> <p>Star10 Star10A</p> <p><b>Manufacturer</b></p> <p>Driftl</p>
Working height	11.2m																				
Horizontal outreach	3m																				
Closed length	2.85m																				
Closed height	1.99m																				
Closed width	1m																				
Rotation	360°																				
Platform height	0.2m																				
Max D10	200kg																				
Weight	2000kg																				
Deck size	0.62m x 0.87m																				

**Working envelope**

**Standard features**

**Optional extras**

**0345 745 0000**  
nationwideplatforms.co.uk

## Standard features

- |  |  |   |  |
|--|--|---|--|
| <ul style="list-style-type: none"> <li> Battery power</li> <li> Diesel power</li> <li> Lithium battery</li> <li> Hybrid power</li> <li> Duel fuel option</li> <li> Gas power option</li> <li> Rough terrain (2 wheel drive)</li> <li> Rough terrain (4 wheel drive)</li> </ul> | <ul style="list-style-type: none"> <li> IPAF licence type</li> <li> IPAF licence type</li> <li> IPAF licence type</li> <li> IPAF licence type</li> <li> IPAF licence type</li> <li> Tracked</li> <li> Mast boom</li> <li> Articulating boom</li> </ul> | <ul style="list-style-type: none"> <li> Straight telescopic boom</li> <li> Non-marking tyres</li> <li> Outrigger legs</li> <li> Maximum people in cage*</li> <li> Push around vehicles</li> <li> Operator powered</li> <li> Indoor use only</li> <li> Indoor/Outdoor</li> </ul> | <ul style="list-style-type: none"> <li> Self drive</li> <li> J1B rotation</li> <li> IPAF driving licence type</li> <li> Power to platform</li> <li> Generator</li> </ul> |
|--|--|---|--|

## Optional extras

- |   |   |  |   |
|---|---|--|---|
| <ul style="list-style-type: none"> <li> SkySiren®</li> <li> SkySiren® PCS</li> <li> SkySentry®</li> <li> SkyRak®</li> </ul> | <ul style="list-style-type: none"> <li> SkyRakPlus®</li> <li> SkyRakBoom®</li> <li> SkyRakMulti™</li> <li> SkyTel™</li> </ul> | <ul style="list-style-type: none"> <li> SkyRakEdge™</li> <li> SkyShield™</li> <li> SkyScreen™</li> <li> Material handling attachments</li> </ul> | <ul style="list-style-type: none"> <li> Generator</li> <li> Camera pod</li> <li> Circular camera cage</li> <li> Wendy lighting frame</li> </ul> |
|---|---|--|---|

\*The number refers to indoor or outdoor uses. Call us for details.

Please note that all technical information referred to in this document is intended for guidance purposes only and does not act as a replacement for the manufacturer's specification or equipment user guides which should be referred to prior to placing your order. No responsibility can be accepted in the event that this document contains any errors, omissions or data that is different from that in the manufacturer's specification or equipment user guides.