

T23C | Truck

Working height	23.0m
Outreach	10.0m
Max horizontal outreach*	10.0m
Overall travel length	7.48m
Overall travel height	2.8m
Overall travel width	2.25m
Platform cage size	1.4m x 0.7m
Rotation	320°
Max SWL	250kg
Gross vehicle weight	3500kg
Full operational width	3.92m
Minimum operational width	3.11m
Point loading front / rear	28kN / 28kN

* With full safe working load

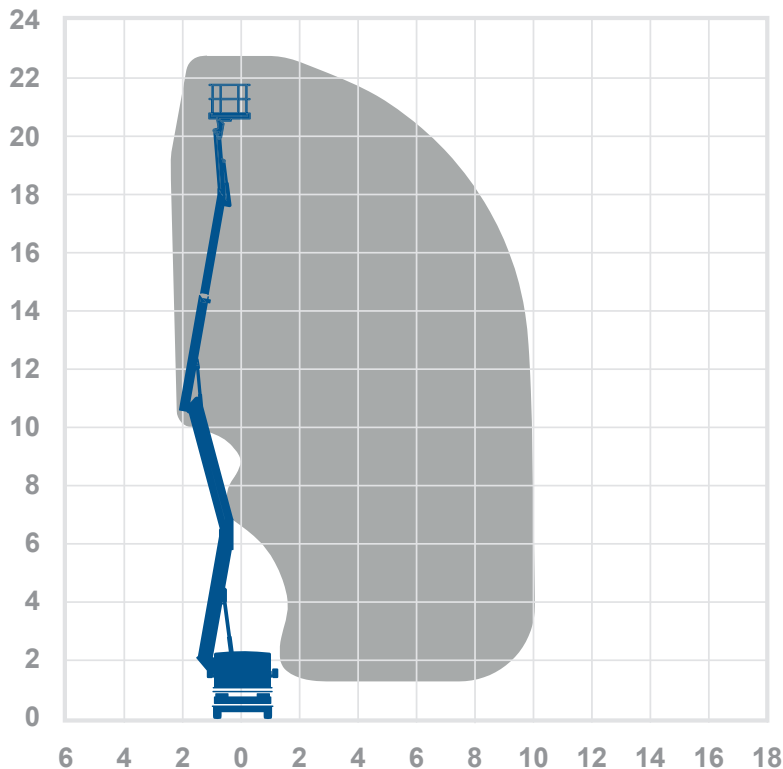
Alternative machines

N/A

Manufacturer

CTE

Working envelope



23.0m
10.0m

Standard features



Optional features



0345 745 0000
nationwideplatforms.co.uk

**Nationwide
Platforms**
A **LOXAM** Company


Understanding this Product Specification Sheet

This product specification sheet is designed to help you better understand the capabilities and key features of the piece of equipment and whether it will meet your requirements.

The working envelope with height/reach indicator provides a quick visual reference to assist your equipment selection.

If you are unsure about any aspect of this piece of equipment, or would like more information to assist with your selection, please call our expertly trained staff on **0345 745 0000**

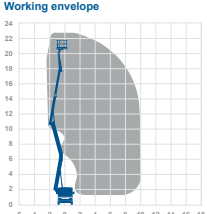
Height and outreach

Working height  Horizontal outreach 

T23C | Truck


Working height	23.0m	Alternative machines
Outreach	10.0m	N/A
Overall travel length	7.48m	Manufacturer
Overall travel height	2.8m	CTE
Overall travel width	2.25m	
Platform cage size	1.4m x 0.7m	
Rotation	240°	
Max SWL	250kg	
Gross vehicle weight	3500kg	
Full operational width	3.89m	
Minimum operational width	N/A	
Point loading front / rear	2800daN / 2800daN	

Working envelope



Standard features:

Optional features:

0345 745 0000
nationwideplatforms.co.uk
 **Nationwide Platforms**
A LOXAM Company

Standard features

- | | | | |
|-------------------------------|-------------------|--------------------------|----------------------|
| Battery power | IPAF licence type | Straight telescopic boom | Self drive |
| Diesel power | IPAF licence type | Non-marking tyres | JIB rotation |
| Lithium battery | IPAF licence type | Outrigger legs | Driving licence type |
| Hybrid power | IPAF licence type | Maximum people in cage* | Power to platform |
| Dual fuel option | IPAF licence type | Push around vehicles | Generator |
| Gas power option | Tracked | Operator powered | |
| Rough terrain (2 wheel drive) | Mast boom | Indoor use only | |
| Rough terrain (4 wheel drive) | Articulating boom | Indoor/Outdoor | |

Optional extras

- | | | | |
|---------------|--------------|-------------------------------|----------------------|
| SkySiren® † | SkyRakBoom® | SkyScreen™ | Circular camera cage |
| SkySiren® PCS | SkyRakMulti™ | Material handling attachments | Wendy lighting frame |
| SkySentry® | SkyTel™ | Generator | Bucket |
| SkyRak® | SkyRakEdge™ | Power to platform | Fork Extention |
| SkyRakPlus® | SkyShield™ | Camera pod | Fork Lifting Hook |

* The number refers to indoor or outdoor uses. Call us for details.

† Secondary guarding system fitted may be original manufacturers equipment.

Please note that all technical information referred to in this document is intended for guidance purposes only and does not act as a replacement for the manufacturer's specification or equipment user guides which should be referred to prior to placing your order. No responsibility can be accepted in the event that this document contains any errors, omissions or data that is different from that in the manufacturer's specification or equipment user guides.