

## Working Height 27.7m

## Horizontal Outreach 23.4m

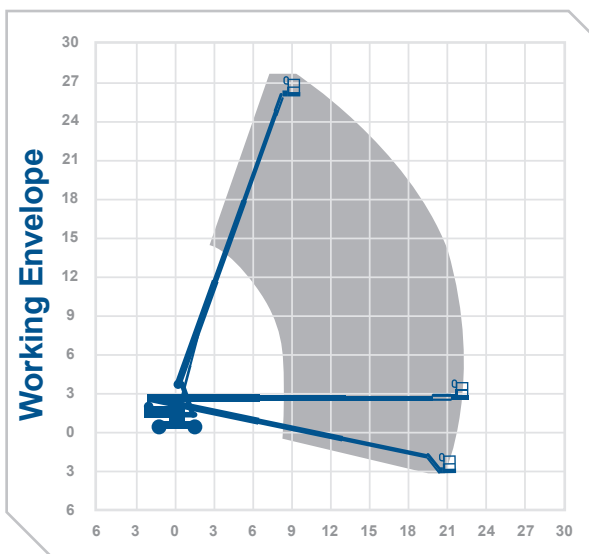
Closed Length	12.4m
Closed Height	2.8m
Closed Width	2.4m
Platform Size	1.8m x 0.76m
Rotation	Continuous
Max SWL	227kg
Weight	16500kg
Reach Below Ground	2.89m
Operational Full Width	3.07m

### Alternative machines

G85  
860SJ

### Manufacturer

Genie



**0345 745 0000**  
**nationwideplatforms.co.uk**

**Nationwide  
Platforms**  
A **LOXAM** Company

Please note that all technical information referred to in this document is intended for guidance purposes only and does not act as a replacement for the manufacturer's specification or equipment user guides which should be referred to prior to placing your order. No responsibility can be accepted in the event that this document contains any errors, omissions or data that is different from that in the manufacturer's specification or equipment user guides.