

# MT1033 | Telehandler

**Working height** 9.98m

**Outreach** 7.15m

Overall Length 4.93m

Overall Height 2.30m

Overall Width 2.33m

Weight (with fork) 7790kg

Max Lift Capacity 3300kg

Max Lift Capacity (full reach)\* 1000kg

Outside Turn Radius 3.80m

\* Stabilisers lowered

## Alternative machines

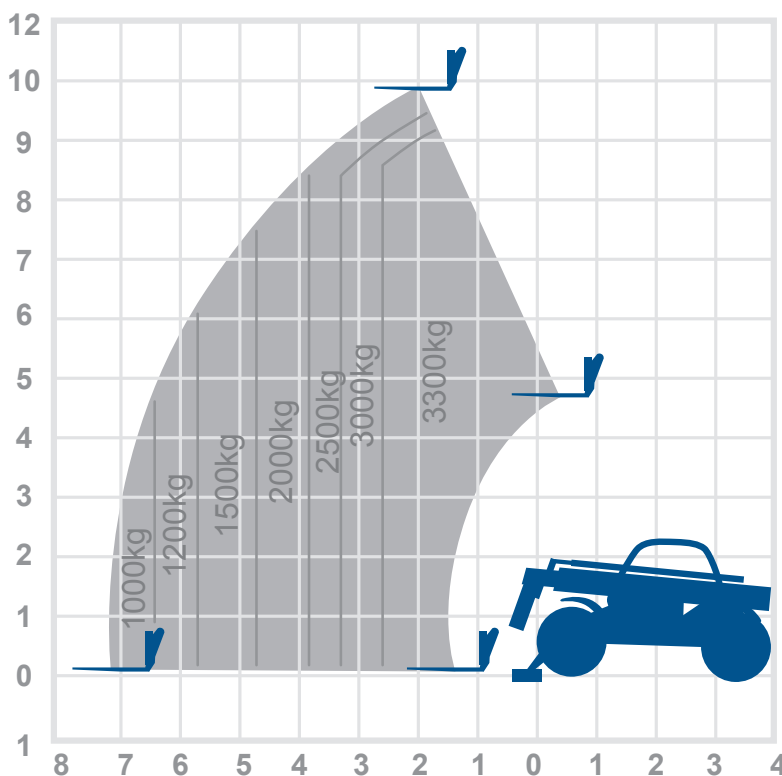
N/A

## Manufacturer

Manitou

**Specialist telehandler training required to operate.**

## Working envelope



9.98m

7.15m

## Standard features



## Optional features



**0345 745 0000**  
[nationwideplatforms.co.uk](http://nationwideplatforms.co.uk)

**Nationwide Platforms**  
A **LOXAM** Company

# Understanding this Product Specification Sheet

This product specification sheet is designed to help you better understand the capabilities and key features of the piece of equipment and whether it will meet your requirements.

The working envelope with height/reach indicator provides a quick visual reference to assist your equipment selection.

If you are unsure about any aspect of this piece of equipment, or would like more information to assist with your selection, please call our expertly trained staff on **0345 745 0000**

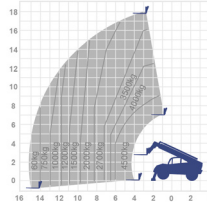
## Height and outreach

Working height  Horizontal outreach 

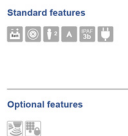
MT1840
| Telehandler

Working height	17.55m	Alternative machines
Outreach	13.08m	N/A
Overall Length	6.15m	Manufacturer Manitou
Overall Height	2.45m	
Overall Width	2.36m	
Weight (with fork)	11710kg	
Max Lift Capacity	4000kg	
Max Lift Capacity (full reach)	850kg	
Outside Turn Radius	3.94m	

**Working envelope**



Standard features  
Optional features

**0345 745 0000**  
nationwideplatforms.co.uk


## Standard features

- |                               |                   |                          |                      |
|-------------------------------|-------------------|--------------------------|----------------------|
| Battery power                 | IPAF licence type | Straight telescopic boom | Self drive           |
| Diesel power                  | IPAF licence type | Non-marking tyres        | JIB rotation         |
| Lithium battery               | IPAF licence type | Outrigger legs           | Driving licence type |
| Hybrid power                  | IPAF licence type | Maximum people in cage*  | Power to platform    |
| Dual fuel option              | IPAF licence type | Push around vehicles     | Generator            |
| Gas power option              | Tracked           | Operator powered         |                      |
| Rough terrain (2 wheel drive) | Mast boom         | Indoor use only          |                      |
| Rough terrain (4 wheel drive) | Articulating boom | Indoor/Outdoor           |                      |

## Optional extras

- |               |              |                               |                      |
|---------------|--------------|-------------------------------|----------------------|
| SkySiren® †   | SkyRakBoom®  | SkyScreen™                    | Wendy lighting frame |
| SkySiren® PCS | SkyRakMulti™ | Material handling attachments | Bucket               |
| SkySentry®    | SkyTel™      | Generator                     | Fork Extension       |
| SkyRak®       | SkyRakEdge™  | Camera pod                    | Fork Lifting Hook    |
| SkyRakPlus®   | SkyShield™   | Circular camera cage          |                      |

\* The number refers to indoor or outdoor uses. Call us for details.

† Secondary guarding system fitted may be original manufacturers equipment.

Please note that all technical information referred to in this document is intended for guidance purposes only and does not act as a replacement for the manufacturer's specification or equipment user guides which should be referred to prior to placing your order. No responsibility can be accepted in the event that this document contains any errors, omissions or data that is different from that in the manufacturer's specification or equipment user guides.