

T20CJHV | Truck

Working height	20.0m
Outreach	12.0m
Max horizontal outreach*	9.0m
Overall travel length	7.59m
Overall travel height	2.96m
Overall travel width	2.25m
Platform cage size	1.4m x 0.7m
Rotation	540°
Max SWL	300kg
Gross vehicle weight	3500kg
Full operational width	3.68m
Minimum operational width	2.33m
Point loading front / rear	20kN / 30kN

* With full safe working load

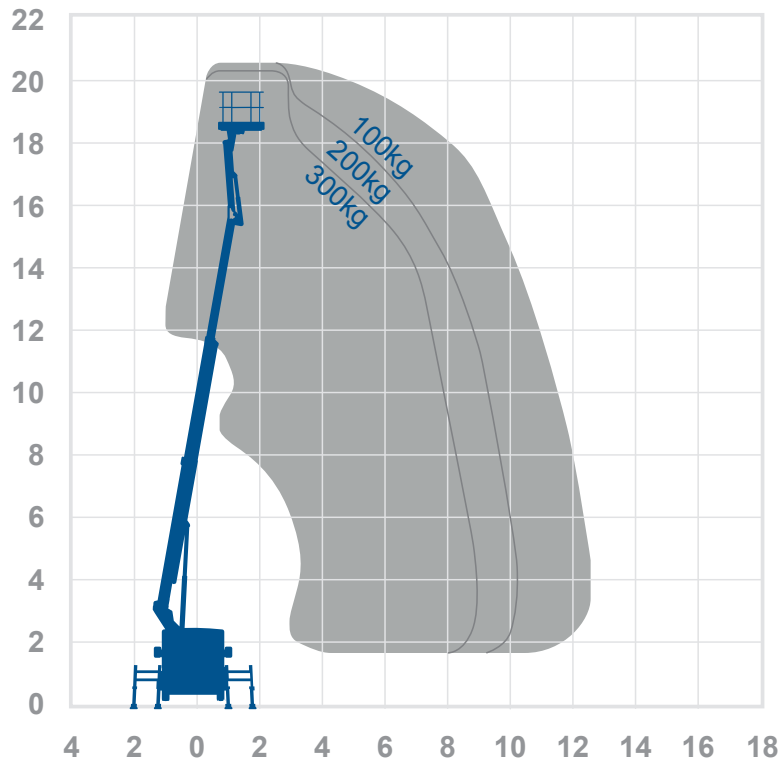
Alternative machines

T20M

Manufacturer

CTE

Working envelope



20.0m
12.0m

Standard features



Optional features



0345 745 0000
nationwideplatforms.co.uk

Nationwide Platforms
A **LOXAM** Company

Understanding this Product Specification Sheet

This product specification sheet is designed to help you better understand the capabilities and key features of the piece of equipment and whether it will meet your requirements.

The working envelope with height/reach indicator provides a quick visual reference to assist your equipment selection.

If you are unsure about any aspect of this piece of equipment, or would like more information to assist with your selection, please call our expertly trained staff on **0345 745 0000**

Height and outreach

Working height Horizontal outreach

T23C | Truck

Working height	23.0m	Alternative machines N/A
Outreach	10.0m	
Overall travel length	7.48m	Manufacturer CTE
Overall travel height	2.8m	
Overall travel width	2.25m	
Platform cage size	1.4m x 0.7m	
Rotation	240°	
Max SWL	250kg	
Gross vehicle weight	3500kg	
Full operational width	3.89m	
Minimum operational width	N/A	
Point loading front / rear	2800daN / 2800daN	

Working envelope

Standard features

Optional features

0345 745 0000
nationwideplatforms.co.uk

Nationwide Platforms
A LOXAM Company

Standard features

- | | | | |
|-------------------------------|-------------------|--------------------------|----------------------|
| Battery power | IPAF licence type | Straight telescopic boom | Self drive |
| Diesel power | IPAF licence type | Non-marking tyres | JIB rotation |
| Lithium battery | IPAF licence type | Outrigger legs | Driving licence type |
| Hybrid power | IPAF licence type | Maximum people in cage* | Power to platform |
| Dual fuel option | IPAF licence type | Push around vehicles | Generator |
| Gas power option | Tracked | Operator powered | |
| Rough terrain (2 wheel drive) | Mast boom | Indoor use only | |
| Rough terrain (4 wheel drive) | Articulating boom | Indoor/Outdoor | |

Optional extras

- | | | | |
|---------------|--------------|-------------------------------|----------------------|
| SkySiren® † | SkyRakBoom® | SkyScreen™ | Circular camera cage |
| SkySiren® PCS | SkyRakMulti™ | Material handling attachments | Wendy lighting frame |
| SkySentry® | SkyTel™ | Generator | Bucket |
| SkyRak® | SkyRakEdge™ | Power to platform | Fork Extention |
| SkyRakPlus® | SkyShield™ | Camera pod | Fork Lifting Hook |

* The number refers to indoor or outdoor uses. Call us for details.

† Secondary guarding system fitted may be original manufacturers equipment.

Please note that all technical information referred to in this document is intended for guidance purposes only and does not act as a replacement for the manufacturer's specification or equipment user guides which should be referred to prior to placing your order. No responsibility can be accepted in the event that this document contains any errors, omissions or data that is different from that in the manufacturer's specification or equipment user guides.